



Aintree, VIC

19 Fields Street

4
BED

3
BATH

2
CAR



Expansive corner lot townhouse in Woodlea Estate

Welcome to the 'Woodlea' Estate,

A community designed for modern and connected living. Woodlea already features and will continue to include more parklands, public spaces, play grounds, sporting grounds, community hubs and connectivity to the CBD thanks to adjacent Rockbank Station.

This corner lot townhome features;
 Expansive dining and lounge room flowing to courtyard
 Entertainers kitchen with island bench, WIP and eropean appliances
 Spacious master bedroom with ensuite and robe
 Floorboards throughout living areas
 BIR's to all bedrooms

\$470 per week

Contact: Aleiasha Clark
 03 9645 1199
 0491 174 507

Type: Townhouse

Date Available: 24/03/2023

<https://www.resbymirvac.com>

MONTAGUE

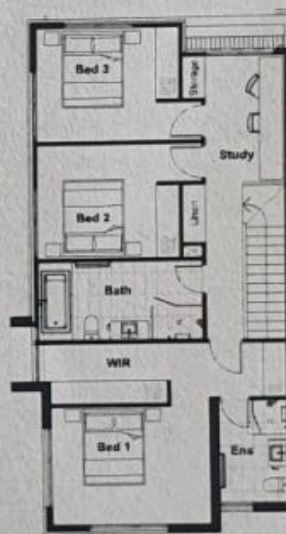
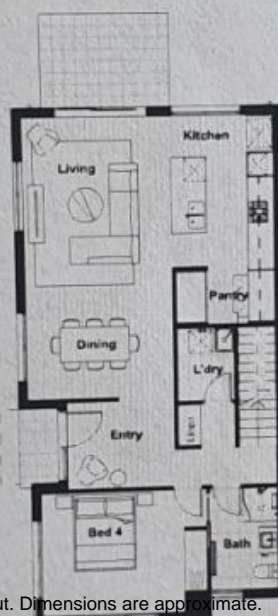
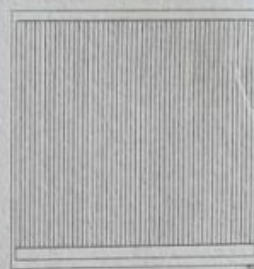
LOT 3772

4 3 2 1

APPLICABLE TO LOT: 3772

AREA SPECIFICATIONS

Total area	221.3 m ²	23.8sq
Living	179.2m ²	19.3sq
Garage	42.1m ²	4.5sq



Plans shown are only indicative of layout. Dimensions are approximate.

Aintree, VIC
19 Fields Street

The information is preliminary only and subject to change without notice as the development progresses. The actual townhouse built may differ from the image shown. Purchasers must refer to the Contract of Sale to confirm the actual floor plan of the town house.

