

**Glebe, NSW**  
606/148 Ross Street

**2** BED **2** BATH **1** CAR 

### Spacious 2-Bedroom Apartment in Harold Park

Welcome to Harold Park!

Here in Harold Park you will find yourself in an idyllic park side location, with only a short walk to Glebe Foreshore. Just meters away, The Tramsheds retail precinct resides featuring cafes, a grocery store, restaurants and a medical centre.

This 6th floor Apartment offers:

- Large bedrooms with floor to ceiling built-ins
- East-facing balcony with shade partition
- Stone benchtops and Miele appliances in kitchen
- Modern bathrooms with bathtub in ensuite

### Deposit taken | Parking Included

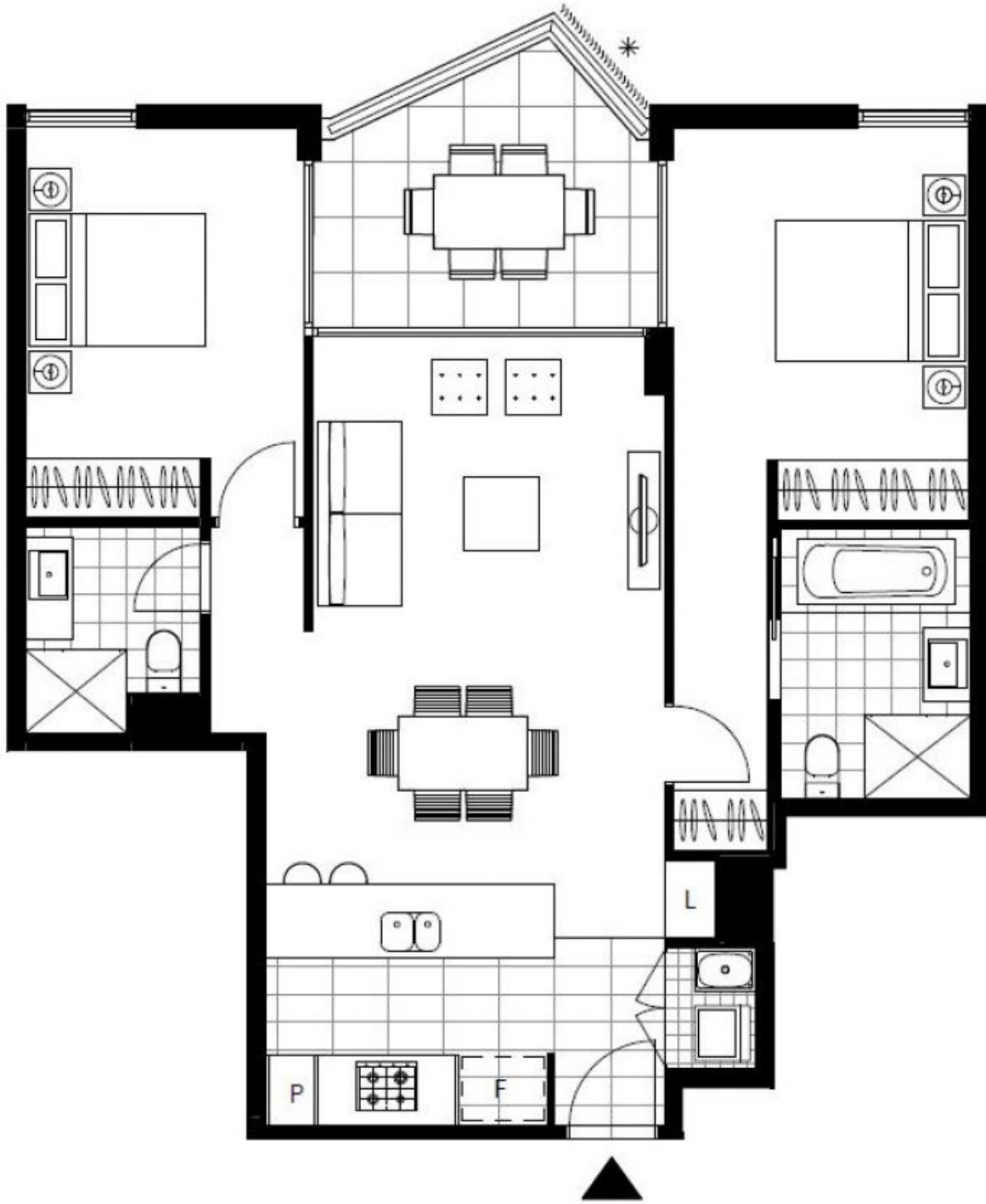
**Contact:** Naz Sabzpouri  
02 8588 8888  
0401 545 440

**Type:** Apartment

**Date Available:** 23/12/2022

**Bond:** \$3840

<https://www.resbymirvac.com>



Plans shown are only indicative of layout. Dimensions are approximate.

**Glebe, NSW**  
606/148 Ross Street