

Glebe, NSW

403/95 Ross Street

2 BED **2** BATH **1** CAR 

Park facing 2-bedroom Apartment in Harold Park.

Welcome to Harold Park!

Here in Harold Park you will find yourself in an idyllic park side location, with only a short walk to Glebe Foreshore. Just meters away, The Tramsheds retail precinct resides featuring cafes, a grocery store, restaurants and a medical centre.

This 101sqm, 4th floor Apartment features:

- Large bedrooms with generous built-in wardrobes
- Spacious living and dining area
- Contemporary kitchen with stone benchtops and Miele appliances
- Ultramodern bathrooms with vanity storage, bath in ensuite

Deposit Taken | \$1100 per week

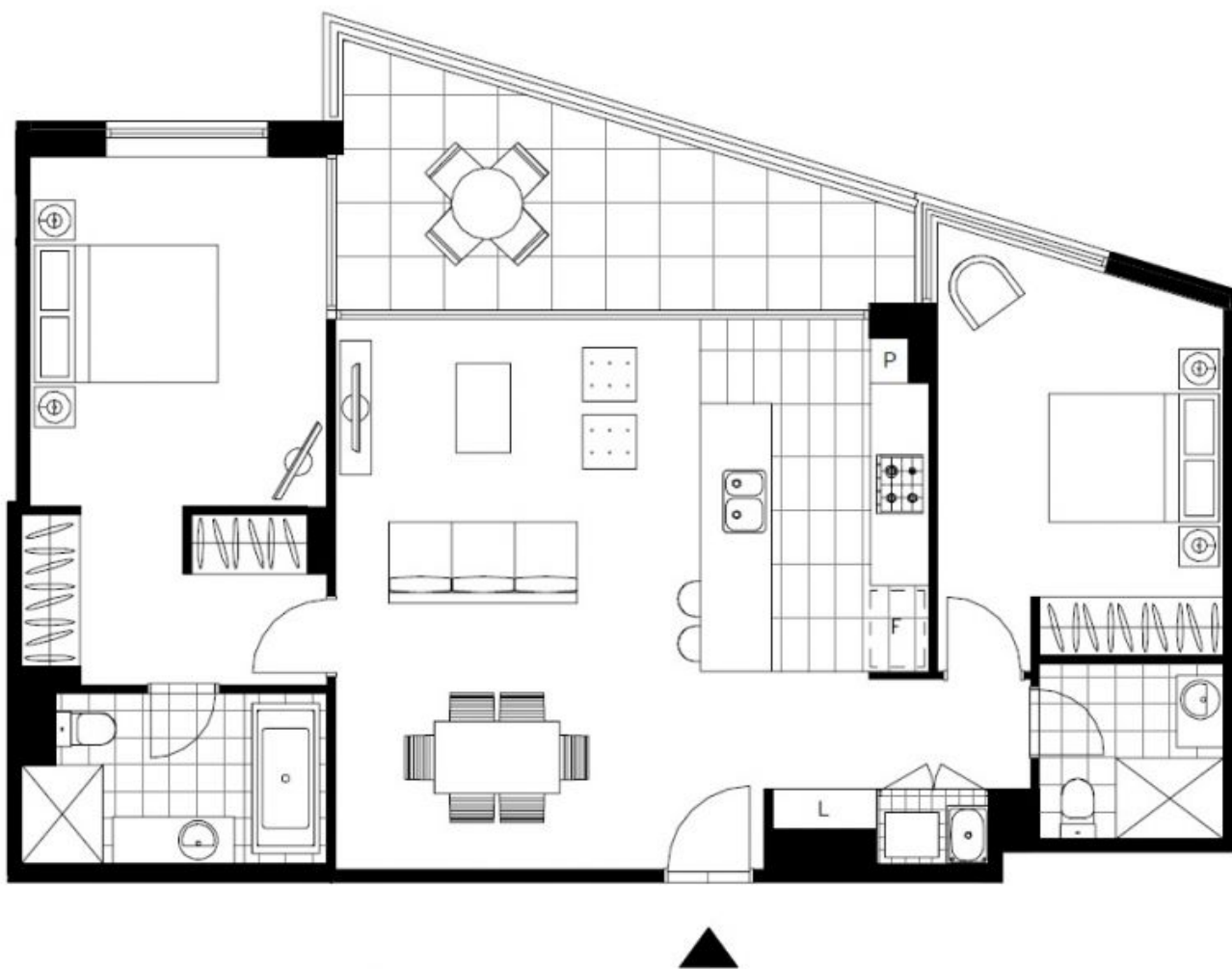
Contact: Naz Sabzpouri
02 8588 8888
0401 545 440

Type: Apartment

Date Available: 19/12/2022

Bond: \$4600

<https://www.resbymirvac.com>



LEVEL 4

Plans shown are only indicative of layout. Dimensions are approximate.

Glebe, NSW
403/95 Ross Street