



Docklands, VIC

2204/80 Lorimer Street

3
BED

2
BATH

2
CAR



Panoramic views of Melbourne CBD, Yarra River and Port Phillip Bay

Welcome to Yarra's Edge, Docklands' most prestigious riverside community.

Here in Yarra's Edge you will find yourself in an perfectly positioned waterfront location, only moments away from an array of cafes, restaurants, parks, Yarra's Edge promenade and IGA supermarket.

This 22nd floor, 3Bedroom apartment features:

New paint and carpet throughout apartment

Generous bedrooms with built-in wardrobes & floor-ceiling windows

Functional living and dining area, with access to balcony

Contemporary kitchen with stone benchtops & European appliances

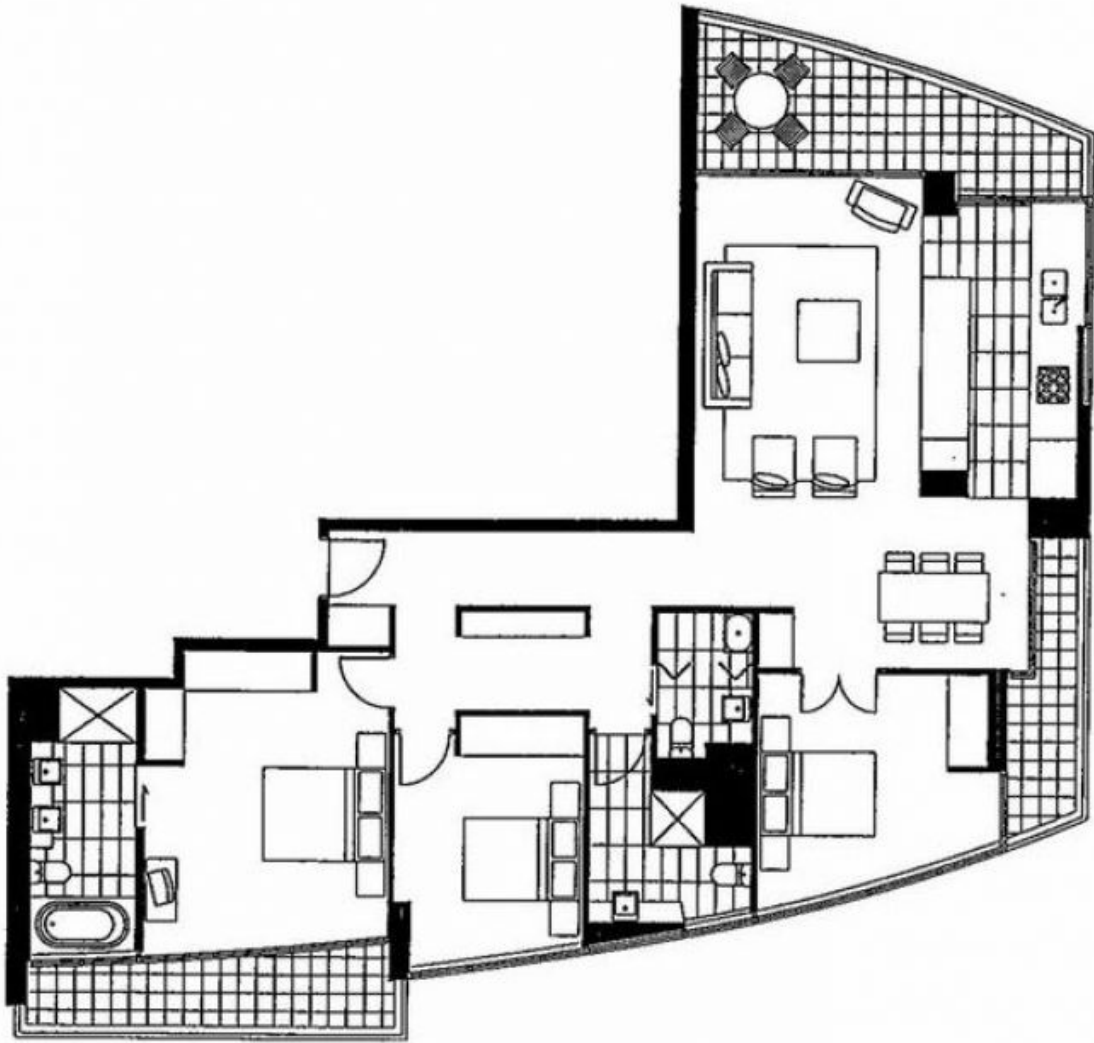
Contact Aleiasha!

Contact: Aleiasha Clark
03 9645 1199
0491 174 507
Anthony Yau
0396451199
0408 527 174

Type: Apartment

Date Available: 13/01/2023

<https://www.resbymirvac.com>



Plans shown are only indicative of layout. Dimensions are approximate.

Docklands, VIC
2204/80 Lorimer Street