



## East Melbourne, VIC

617/280 Albert Street

2 2 2 RES  
 BED BATH CAR

### Luxurious living with two vantage points

Welcome to 'The Eastbourne'

Mirvac's Flagship development designed by Award-Winning Architects Bates & Smart, located in East Melbourne. A neighbourhood of distinction, steeped in history and home to a privileged few.

- This 2Bedroom, 2Bathroom, 2Car Space apartment features;
- A stunning lifestyle on the fringe of the CBD
- Generous living area opens to a balcony
- Prestige Miele equipped kitchen including integrated fridge/ freezer
- Sleek bathroom
- European laundry
- Ducted heating and cooling

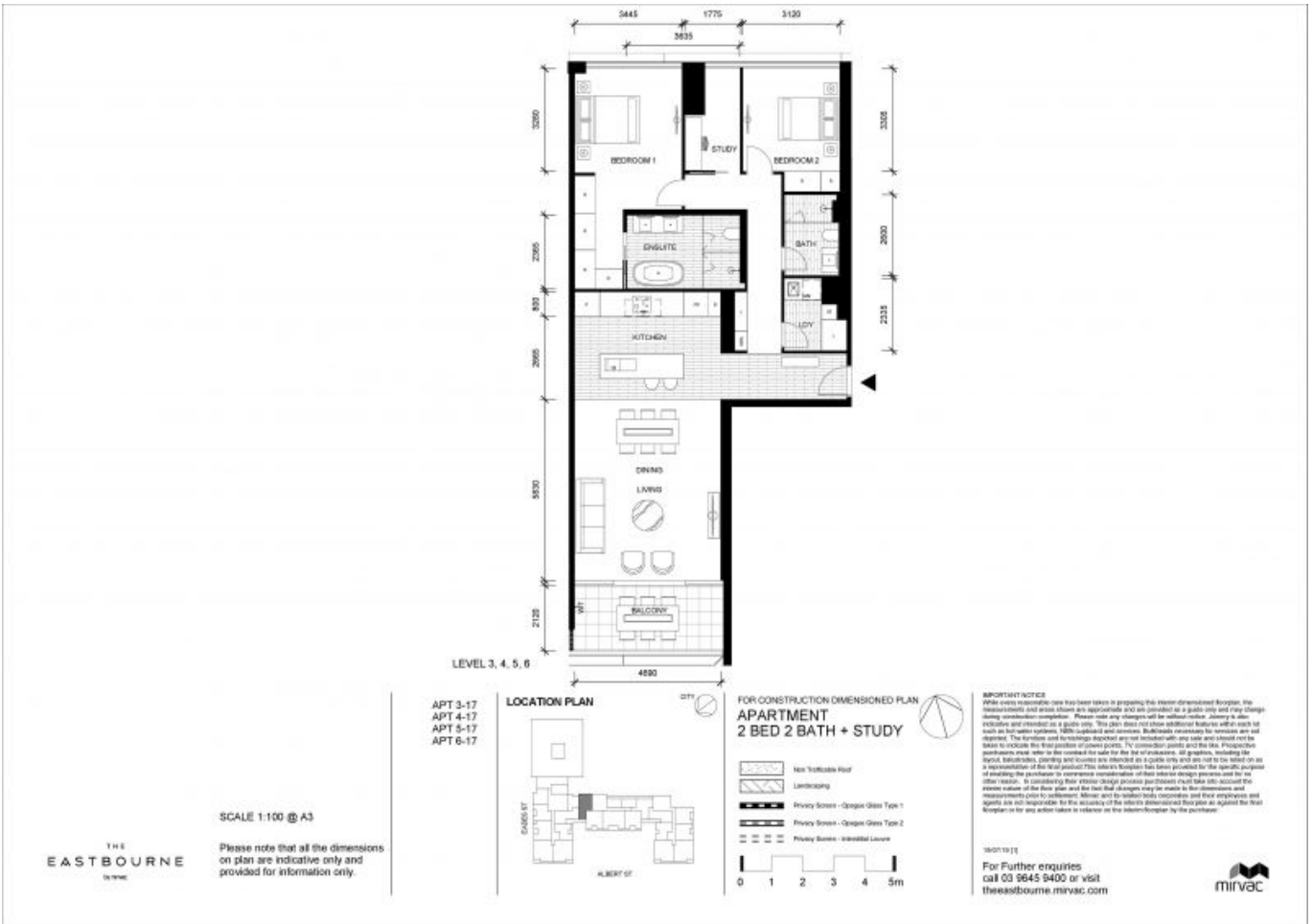
**\$1,250 per week**

**Contact:** Aleiasha Clark  
03 9645 1199  
0491 174 507

**Type:** Apartment

**Date Available:** 13/01/2023

**<https://www.resbymirvac.com>**



Plans shown are only indicative of layout. Dimensions are approximate.

**East Melbourne, VIC**  
617/280 Albert Street