

Docklands, VIC
503/1 Point Park Crescent

2 BED 2 BATH 2 CAR 

WATERFRONT RESERVE LIVING IN LUXE YARRA'S EDGE

Set to a breathtaking backdrop that captures Point Park, Yarra River and Docklands skyline views, this apartment promises a luxury Yarra's Edge lifestyle. It basks in a desirable northeast aspect and enjoys gorgeous vistas through floor-to-ceiling glass windows from all key rooms. Beautifully presented, impeccably appointed and light-filled, it embraces a seamless open plan indoor/outdoor design for entertaining. A true lifestyle address, keeping in shape is a breeze with foreshore walks and a complementary RekDek membership. Step out and stroll to a wide selection of eateries and enjoy rapid access to Southbank and Melbourne's CBD.

\$990,000

Council Rates: \$1,700/year (approx)

Contact: Andrew Chen
03 9645 1199
0490 816 861
Andrew Chen
03 9645 1199
0490 816 861

Type: Apartment

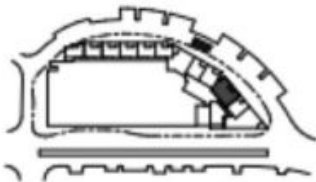
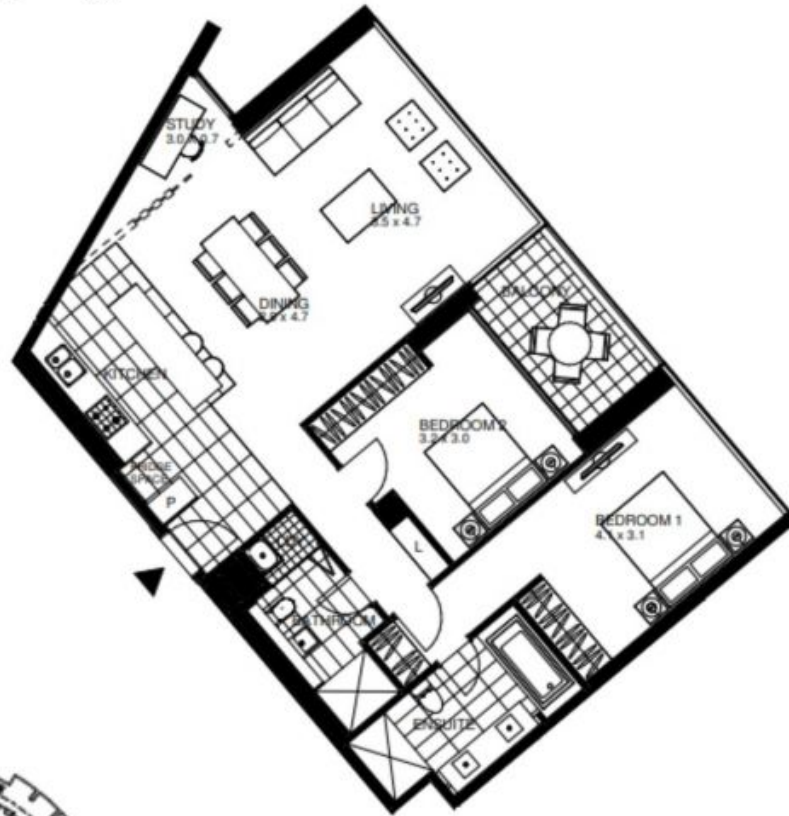
Sold Date: 29/03/2023

<https://www.resbymirvac.com>

? Open plan kitchen and roomy living/dining room stylish floors



2 2 2



LOCATION PLAN

LEVEL 5

INTERNAL: 112m²
BALCONY: 7m²
CARSPACE: 2
STORAGE CAGE: 1
AMENITY: Rek Dek Facilities

Please note that this floor plan is a guide only. The information contained herein is not guaranteed. Dimensions are approximate. Prospective purchasers must rely on their own enquiries.



503/1 Point Park Crescent

DOCKLANDS

Plans shown are only indicative of layout. Dimensions are approximate.

Docklands, VIC
503/1 Point Park Crescent