



Glebe, NSW

201/1 Scotsman Street

2 BED **2** BATH **1** CAR



Sunny 2-Bedroom Apartment with Parking in Harold Park

Welcome to Harold Park, Glebe's Secret Backyard.

Here in Harold Park you will find yourself in an idyllic parkside location, with only a short walk to Glebe Foreshore. Just meters away, The Tramsheds retail precinct resides featuring cafes, a grocery store, restaurants and a medical centre.

This 'Maestro' Apartment features:

- Spacious bedrooms with generous built-in wardrobes
- Open-plan living and dining area, flowing onto balcony
- Contemporary kitchen with stone island benchtop and Miele appliances

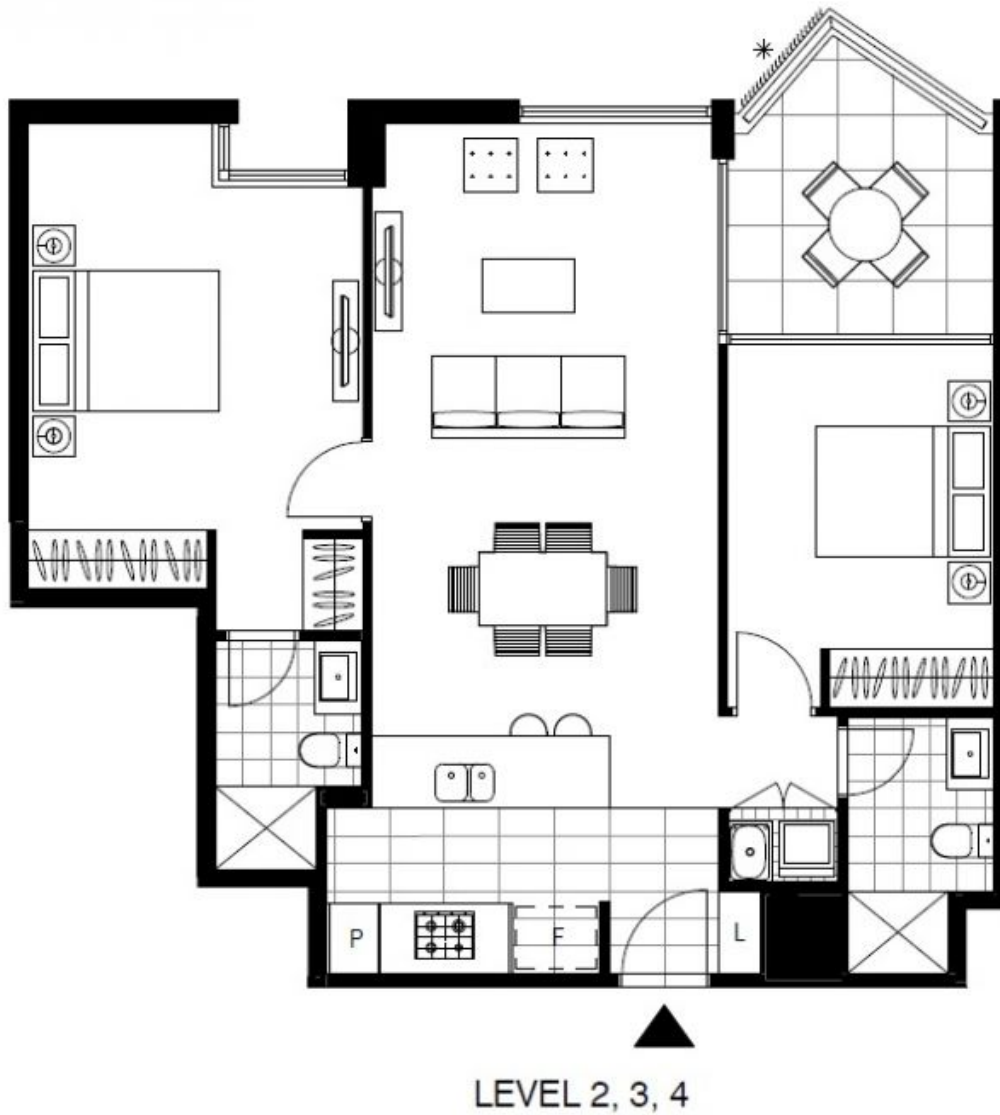
Deposit Taken | \$900 per week

Contact: Naz Sabzpouri
02 8588 8888
0401 545 440

Type: Apartment

Date Available: 17/12/2022

<https://www.resbymirvac.com>



Plans shown are only indicative of layout. Dimensions are approximate.

Glebe, NSW
201/1 Scotsman Street