



Glebe, NSW

115/2 Cullen Close

1
BED

1
BATH



Stylish 1-Bedroom Apartment in Harold Park

Welcome to Harold Park, Glebe's Secret Backyard.

Here in Harold Park you will find yourself in an idyllic parkside location, with only a short walk to Glebe Foreshore. Just meters away, The Tramsheds retail precinct resides featuring cafes, a grocery store, restaurants and a medical centre.

This Apartment features:

- Large bedroom with generous built-in wardrobe
- Open-plan living and dining area, leading to the balcony
- Contemporary kitchen with stone benchtop and Miele appliances
- Stylish bathroom with plenty of storage

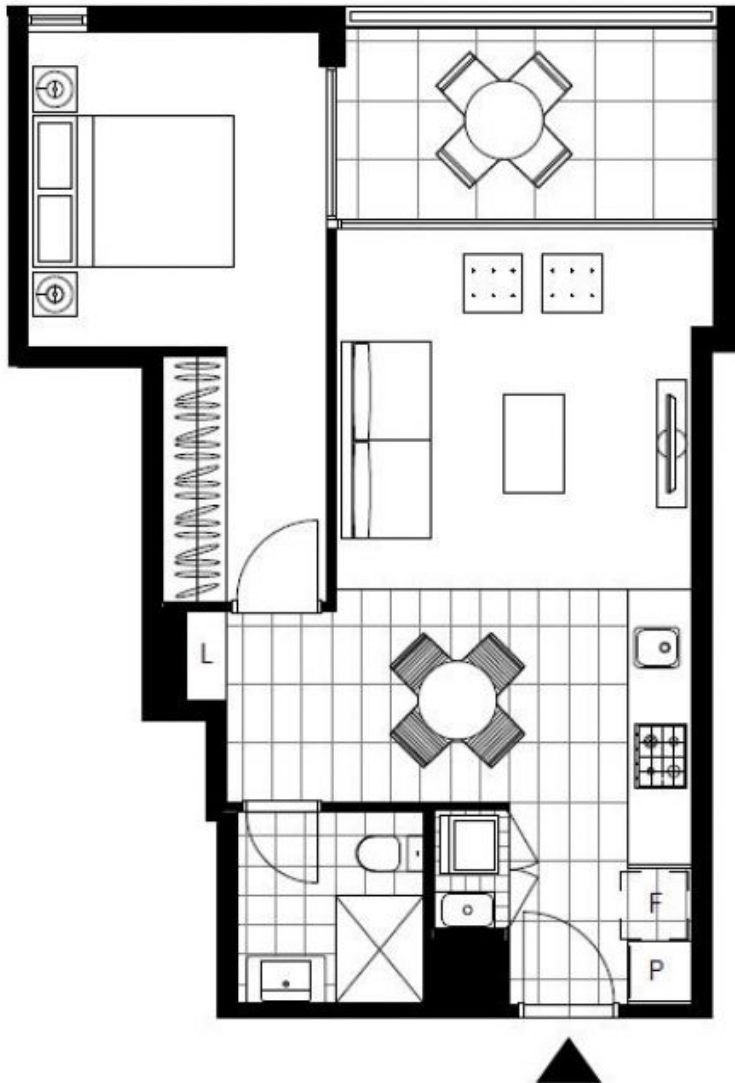
Deposit Taken | \$650 per week

Contact: Naz Sabzpour
02 8588 8888
0401 545 440

Type: Apartment

Date Available: 16/12/2022

<https://www.resbymirvac.com>



Plans shown are only indicative of layout. Dimensions are approximate.

Glebe, NSW
115/2 Cullen Close