

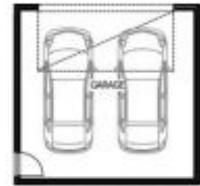


Corner Lots 5026, 5033, 5034 & 5042

4 3 2

Area Specifications

Total Area	185.2m <sup>2</sup>	19.9sq
Living	143.6m <sup>2</sup>	15.5sq
Garage	41.6m <sup>2</sup>	4.5sq



# Aintree, VIC

23 Mustang Circuit

**3** BED **2** BATH **2** CAR



**FOR LEASE | Brand NEW townhouses in Woodlea Estate**

Welcome to the esteemed 'Woodlea' Estate,

A community designed for modern and connected living. Woodlea already features and will continue to include more parklands, public spaces, play grounds, sporting grounds, community hubs and connectivity to the CBD thanks to adjacent Rockbank Station.



**BRAND NEW | COMING SOON**

**Contact:** Aleiasha Clark  
03 9645 1199  
0491 174 507

**Type:** Townhouse  
**Date Available:** 20/12/2022  
**https://www.resbymirvac.com**

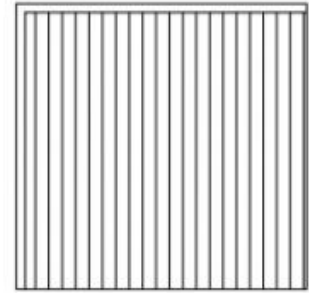
For more information contact Aleiasha Clark from Real Estate Services by Mirvac on 0491 174 507 or 03 9645 1199.

**Corner Lots 5026, 5033,  
5034 & 5042**

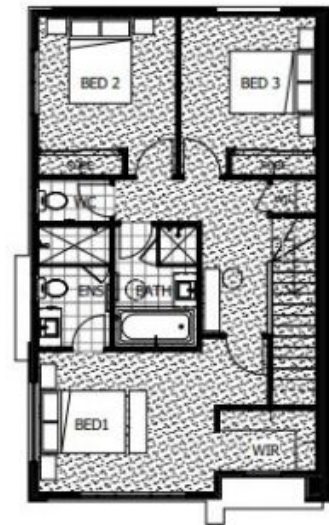
 4  
  3  
  2

**Area Specifications**

Total Area	<b>185.2m<sup>2</sup></b>	<b>19.9sq</b>
Living	<b>143.6m<sup>2</sup></b>	<b>15.5sq</b>
Garage	<b>41.6m<sup>2</sup></b>	<b>4.5sq</b>



**Ground Floor**



**First Floor**

Plans shown are only indicative of layout. Dimensions are approximate.

**Aintree, VIC**  
23 Mustang Circuit