

Glebe, NSW

311/6 Maxwell Road

1
BED

1
BATH



Modern 1-Bedroom Apartment in Harold Park, Glebe

Welcome to Harold Park, Glebe's Secret Backyard.

Here in Harold Park you will find yourself in an idyllic parkside location, with only a short walk to Glebe Foreshore. Just meters away, The Tramsheds retail precinct resides featuring cafes, a grocery store, restaurants and a medical centre.

This 61sqm Maxwell apartment features:

- Well-appointed bedroom with floor-to-ceiling built-in wardrobe
- Functional tiled open-plan living and dining area, flowing onto North facing balcony
- Sleek kitchen with stone benchtops and built-in Miele appliances

Deposit taken | \$660 per week

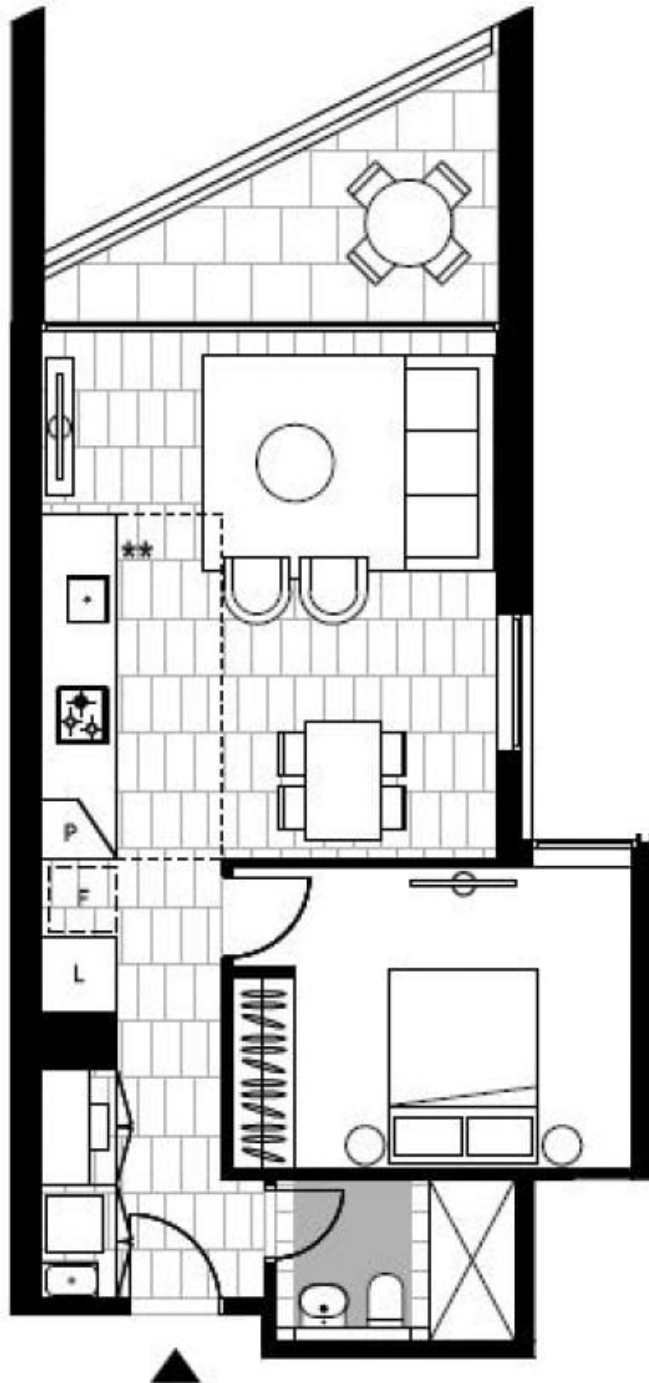
Contact: Naz Sabzpour
02 8588 8888
0401 545 440

Type: Apartment

Date Available: 08/12/2022

Bond: \$2640

<https://www.resbymirvac.com>



LEVEL 3

Plans shown are only indicative of layout. Dimensions are approximate.

Glebe, NSW
311/6 Maxwell Road