



## Glebe, NSW

310/6 Maxwell Road

**1**  
BED

**1**  
BATH



### Gorgeous north facing Mirvac apartment soaking with sunlight

Mirvac and Smart Design Studio bring you Maxwell. Designed to be animated by light and shade, the building is predominantly crisp and white using high quality materials. Weighty materials such as raked-joint face brickwork, exposed concrete bands, and sandstone cladding are offset by the custom designed powdercoated balustrades. Black window frames and grey glass are recessive to further emphasize the dynamic forms of the exterior.

A sleek pad positioned for convenience, this apartment is perfect for first-home buyers, investors and those looking for a sophisticated city base. Its artfully conceived minimalist aesthetic includes a long entrance hallway, an open plan in/outdoor design and a private bedroom alcove. There are parks and walking tracks at your doorstep and lively Tramsheds eateries within footsteps.

**Sold \$690,000**

**Council Rates:** \$286/qtr (approx)

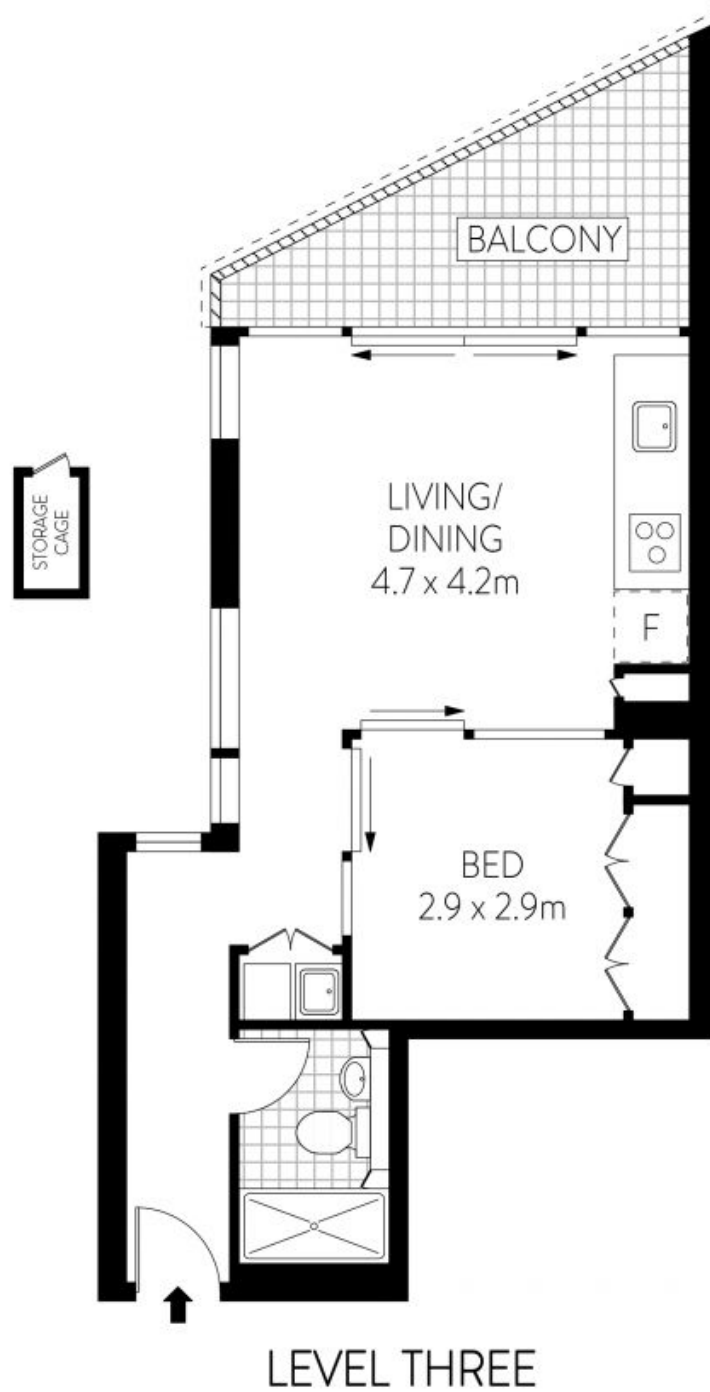
**Strata Rates:** \$977/qtr (approx)

**Contact:** Matthew Matthews  
02 8588 8888  
0418 266 590

**Type:** Apartment

**Sold Date:** 31/03/2023

<https://www.resbymirvac.com>



PLANS SHOWN ONLY INDICATIVE OF LAYOUT. DIMENSIONS ARE APPROXIMATE.  
Floor plans by [www.remaustralia.com](http://www.remaustralia.com)  
Ref. No: T5501

INTERNAL : 45m<sup>2</sup>  
BALCONY : 9m<sup>2</sup>  
STORAGE : 1m<sup>2</sup>



Plans shown are only indicative of layout. Dimensions are approximate.

**Glebe, NSW**  
310/6 Maxwell Road

GLEBE