



Mulgrave, VIC

6 Goodison Court

3
BED

2
BATH

2
CAR



Sophisticated and Spacious, this Waverley Park Icon is Yours to Secure

This contemporary Mirvac designed home offers position, prominence, and polish for a life in perfect balance.

Located centrally within the desirable masterplanned community of Waverley Park on a large 419 m2 block of land, 6 Goodison Court boasts intricate detail, light-filled living zones, spacious bedrooms with robes and bathrooms across 2 superb levels.

Featuring a brand-new interior refurbishment, this is a home with the space, style, and sophistication suitable for both functional living and entertaining. An exquisite open-plan kitchen with a generous-sized island bench has been fitted out with quality European appliances and forms the centrepiece of a flowing floor plan accentuated by a feature staircase, bluestone feature tiles and the modern conveniences you would expect from such an exceptional offering. With sustainability in mind, residents will benefit from impressive 8 star NATHERS* thermal efficiency,

achieved with high performance window glazing and insulation. Additionally, the home features solar panels, LEDs and water efficient (5-star WELS rated) tapware.

A bright, low-maintenance outdoor entertaining space is surrounded by stunning landscaped gardens and large double glazed sliding doors to allow for seamless indoor-outdoor flow. The pristine location ensures parks, playgrounds, shopping, and picturesque walking trails are within proximity.

\$1,522,000

Council Rates: \$1,816/year (approx)

Contact: Sara Liyanage
03 9645 1199
0491 091 818
Sara Liyanage
03 9645 1199
0491 091 818

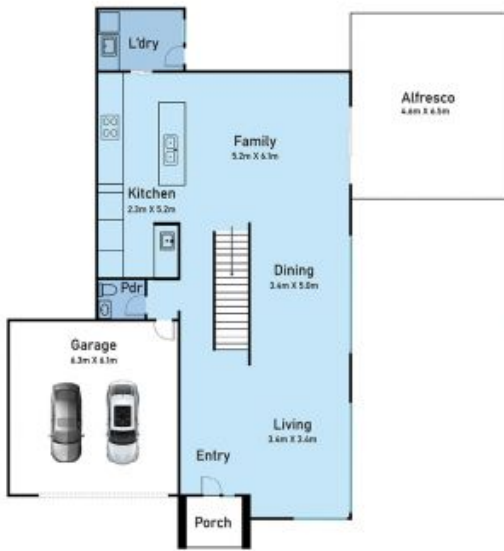
Type: House

Sold Date: 26/11/2022

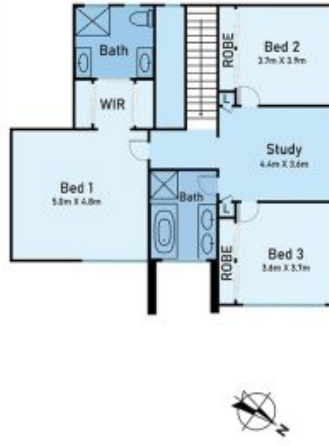
Land: 419Square Metres

<https://www.resbymirvac.com>

Ground Floor



First Floor



Site Plan



6 Goodison Court, Mulgrave

* Dimensions are approximate and for illustrative purposes only



Plans shown are only indicative of layout. Dimensions are approximate.

Mulgrave, VIC
6 Goodison Court