



## Glebe, NSW

805/122 Ross Street

**3** BED **2** BATH **2** CAR 

### Over-sized and Superbly Appointed 3 Bedroom Apartment With Views - Executive Living at it's Finest

Welcome to Harold Park!

Here in Harold Park you will find yourself in an idyllic parkside location, with only a short walk to Glebe Foreshore. Just meters away, The Tramsheds retail precinct resides featuring cafes, a grocery store, restaurants and a medical centre.

This 176sqm top floor apartment features:

- Functional living and dining areas, with access to balcony
- Quality kitchen with stone benchtops and built-in Miele appliances
- Well-appointed bedrooms with generous built-in wardrobes

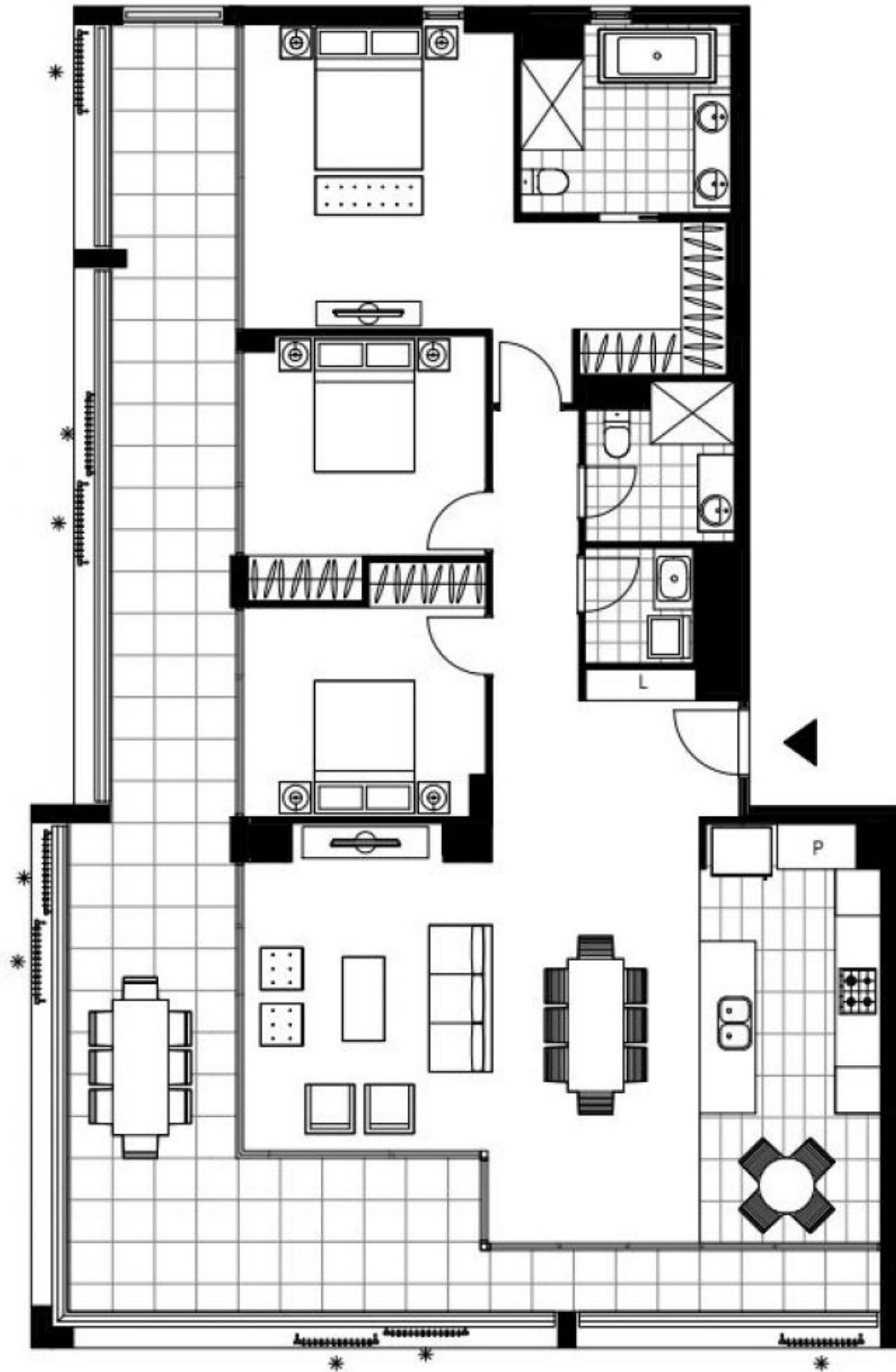
**Deposit Taken | \$1600 per week**

**Contact:** Naz Sabzpouri  
02 8588 8888  
0401 545 440

**Type:** Apartment

**Date Available:** 18/11/2022

**<https://www.resbymirvac.com>**



Plans shown are only indicative of layout. Dimensions are approximate.

**Glebe, NSW**  
805/122 Ross Street