



Glebe, NSW

102/159 Ross Street

3 BED **2** BATH **2** CAR 

Stunning Park Facing Three Bedroom in Harold Park

Welcome to Harold Park, Glebe's Secret Backyard.

Here in Harold Park you will find yourself in an idyllic parkside location, with only a short walk to Glebe Foreshore. Just meters away, The Tramsheds retail precinct resides featuring cafes, a grocery store, restaurants and a medical centre.

This stunning three bedroom has to offer;

- Functional living and dining areas, with access to the balcony
- Large North-East facing balcony overlooking the park with private access
- Quality kitchen with stone benchtops and built-in Miele appliances
- Well-appointed bedrooms with generous built-in wardrobes

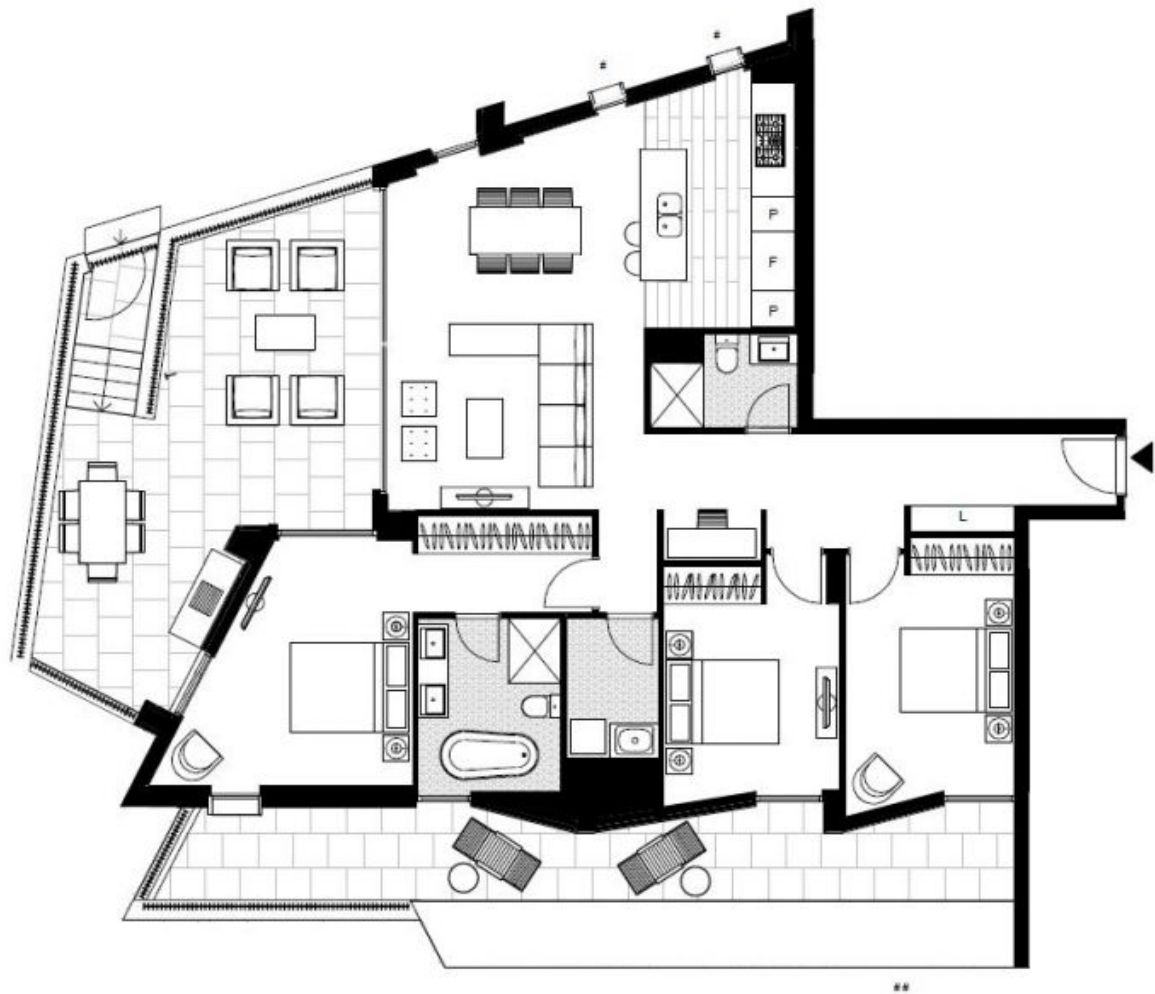
Deposit Taken | \$1500 per week

Contact: Naz Sabzpour
02 8588 8888
0401 545 440

Type: Terrace
Date Available: 18/11/2022

Bond: \$6000

<https://www.resbymirvac.com>



LEVEL 1

Plans shown are only indicative of layout. Dimensions are approximate.

Glebe, NSW
102/159 Ross Street