



## Glebe, NSW

403/2 Scotsman Street

**1**  
BED

**1**  
BATH

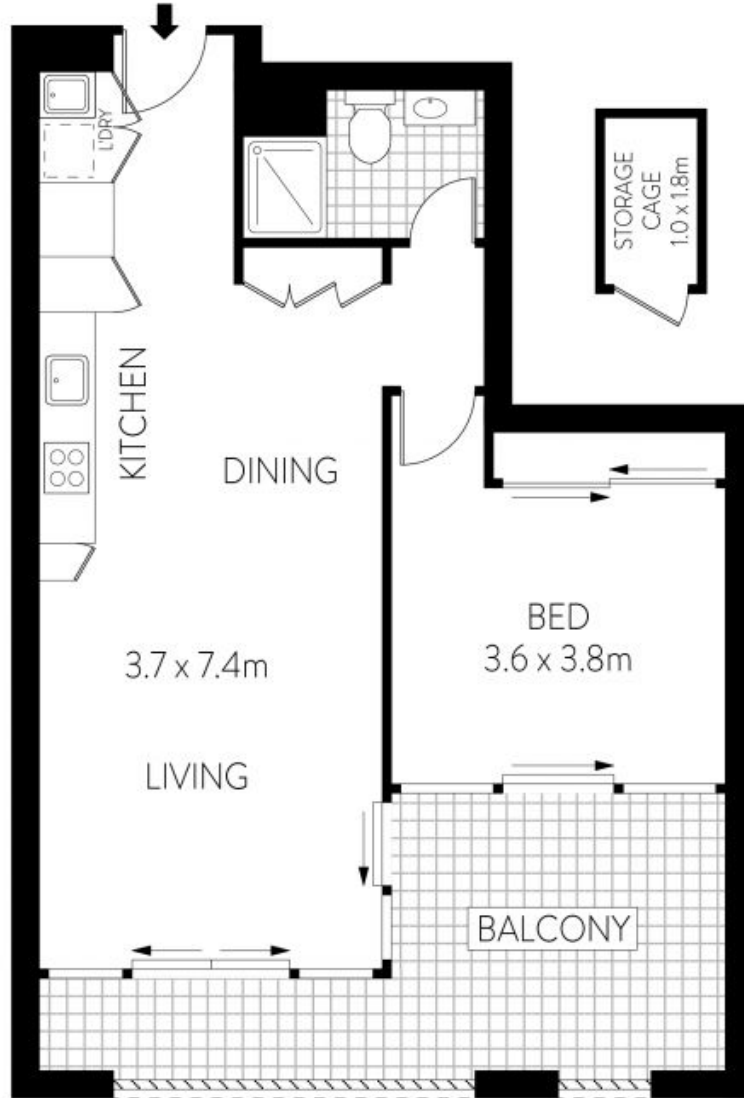


### Inspection Cancelled | Under Offer

Set to a superb backdrop of lush greenery, this apartment has been designed with open plan indoor/outdoor living and entertaining in mind. The huge covered terrace is almost like another room. Generous proportions and contemporary finishes ensure a lifestyle of comfort and ease. Step out to bus transport and stroll to the light rail and the culinary attractions of The Tramsheds.

- ? Open plan kitchen and vast living/dining flows out to terrace
- ? Stone kitchen, gas stainless steel Miele appliances, dishwasher
- ? Generous bedroom with a built-in robe and access to balcony
- ? Stylish fully tiled bathroom, internal laundry, air conditioning
- ? Enjoy local walking tracks, parks and harbour foreshore reserves
- ? Stroll to the Tramsheds for lively eateries, shops and supermarket

**Council Rates:** \$286/qtr (approx)  
**Strata Rates:** \$833/qtr (approx)  
**Contact:** Matthew Matthews  
 02 8588 8888  
 0418 266 590  
**Type:** Apartment  
**Sold Date:** 12/01/2023  
**Land:** 68Square Metres  
<https://www.resbymirvac.com>



LEVEL FOUR



PLANS SHOWN ONLY INDICATIVE OF LAYOUT. DIMENSIONS ARE APPROXIMATE.  
Floor plans by www.remaustralia.com  
Ref. No: T5461

INTERNAL : 55m<sup>2</sup>  
BALCONY : 15m<sup>2</sup>  
STORAGE : 2m<sup>2</sup>



real estate  
services  
by mirvac

Plans shown are only indicative of layout. Dimensions are approximate.

**Glebe, NSW**  
403/2 Scotsman Street

FOREST LODGE