



Glebe, NSW

135 Ross Street

3 BED **2** BATH **2** CAR 

Rare 3-Bedroom Terrace with direct park access in Harold Park

Welcome to Harold Park!

Here in Harold Park you will find yourself in an idyllic parkside location, with only a short walk to Glebe Foreshore. Just meters away, The Tramsheds retail precinct resides featuring cafes, a grocery store, restaurants and a medical centre.

Positioned on the park, this 228sqm 3-Bedroom Terrace features:

- Well-appointed bedrooms with floor to ceiling built-in wardrobes
- Master bedroom includes private balcony and ensuite with bath
- Modern kitchen with stone benchtops and Miele appliances

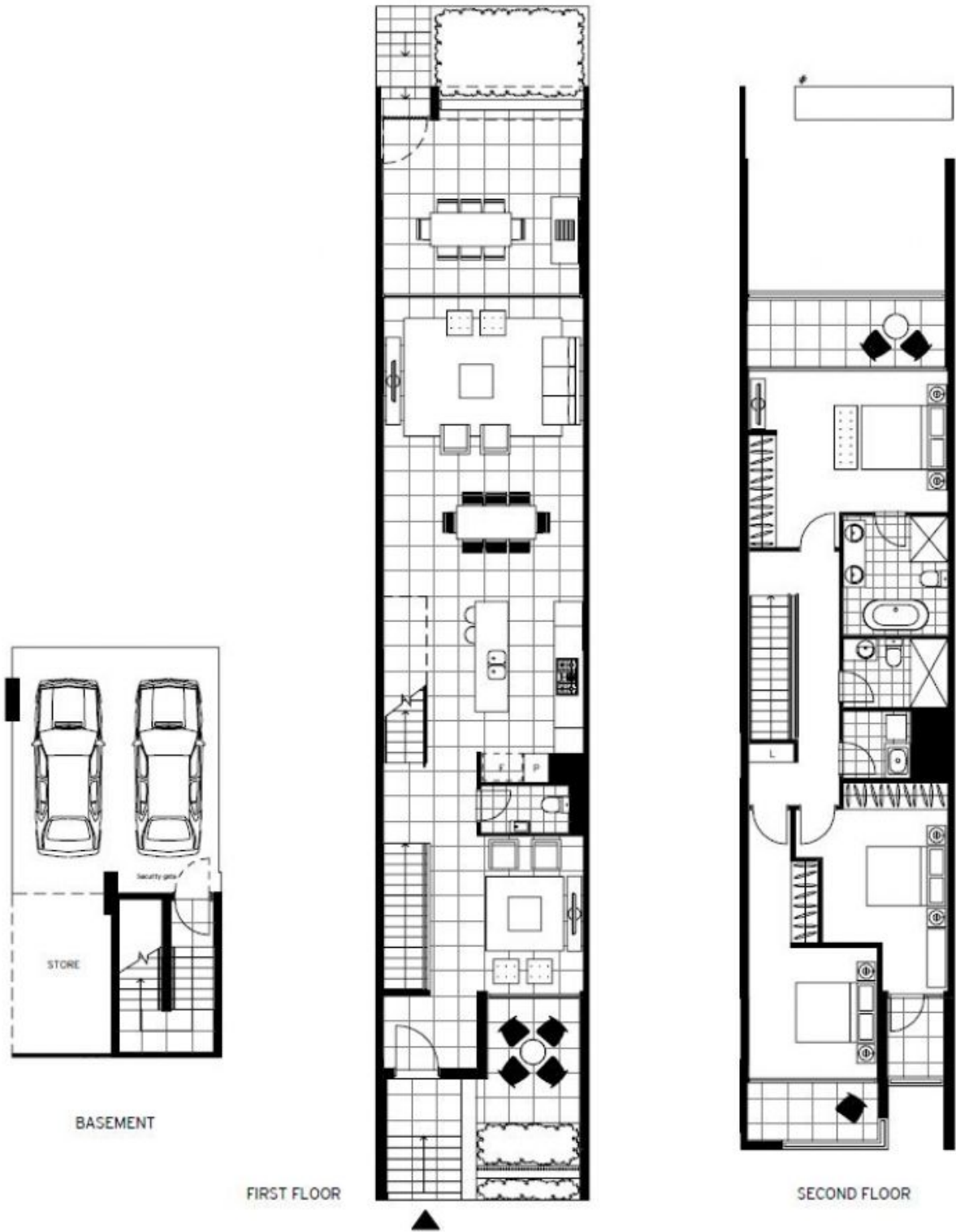
\$1650 per week | Deposit Taken

Contact: Naz Sabzpour
02 8588 8888
0401 545 440

Type: Terrace

Date Available: 16/01/2023

<https://www.resbymirvac.com>



Plans shown are only indicative of layout. Dimensions are approximate.

Glebe, NSW
135 Ross Street