



## Sydney Olympic Park, NSW

22209/2 Figtree Drive

1  
BED

1  
BATH



### North-West Facing 1 Bedroom Apartment in 'Pavilions', Sydney Olympic Park

Welcome to Pavilions in Sydney Olympic Park

Located in Sydney Olympic Park, you will find yourself within close proximity to an abundance of parklands, cafes, restaurants & bars, public transport and world-class sporting facilities. As a resident in Pavilions by Mirvac you will enjoy access to a gym, co-working space as well as a children's play area.

This 58sqm, Mirvac apartment features:

- Spacious bedroom with built-in wardrobes
- Bright living and dining area, flowing onto balcony

**\$520 per week**

**Contact:**

Christine Howison

02 8588 8888

0459 222 085

Georgia Glynn

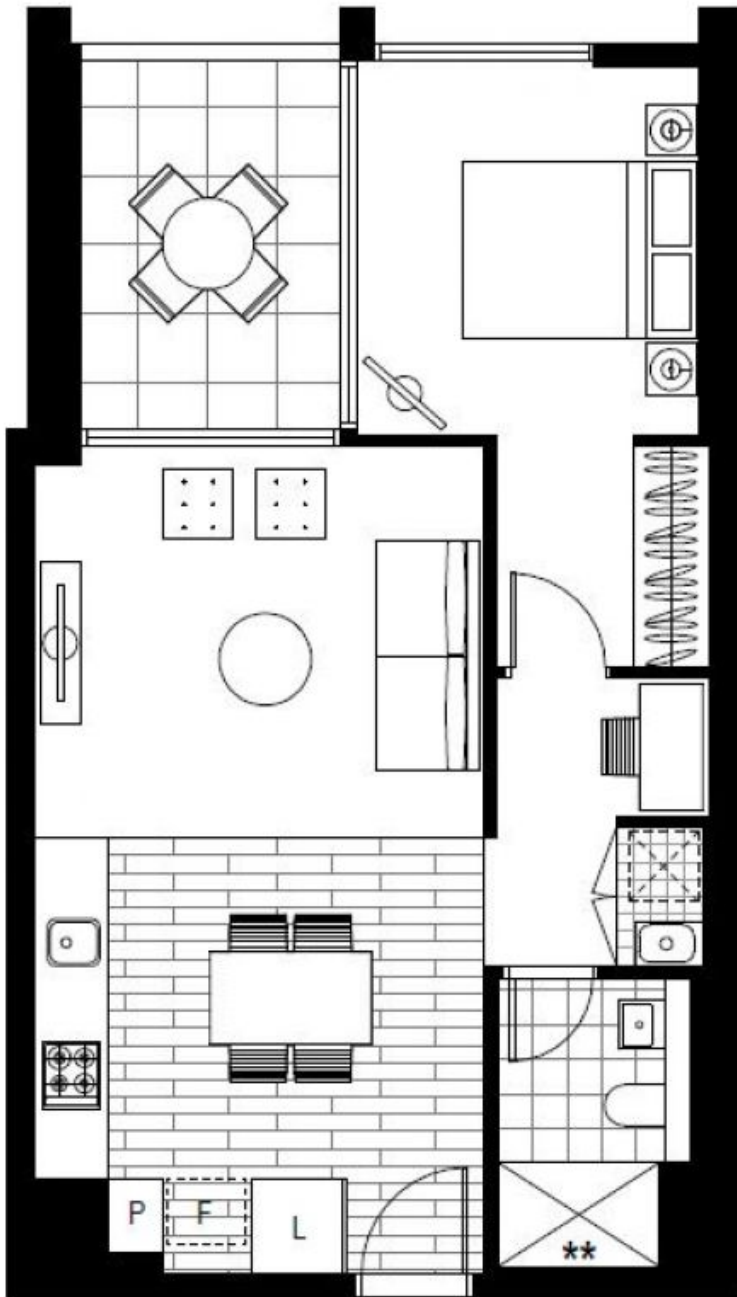
02 8588 8888

0481 388 777

**Type:** Apartment

**Date Available:** 29/09/2022

**<https://www.resbymirvac.com>**



Plans shown are only indicative of layout. Dimensions are approximate.

**Sydney Olympic Park, NSW**  
22209/2 Figtree Drive