



## Glebe, NSW

309/6 Maxwell Road

**2**  
BED

**1**  
BATH

**1**  
CAR



### Rare North-Facing 2-Bedroom Apartment in Maxwell Place, Harold Park

Welcome to Harold Park!

Here in Harold Park you will find yourself in an idyllic parkside location, with only a short walk to Glebe Foreshore. Just meters away, The Tramsheds retail precinct resides featuring cafes, a grocery store, restaurants and a medical centre.

This top floor, 2-Bedroom Apartment has to offer:

- Spacious tiled living/dining area opening up to a private balcony
- Well-appointed bedrooms with generous built-in wardrobes
- Large north facing balcony

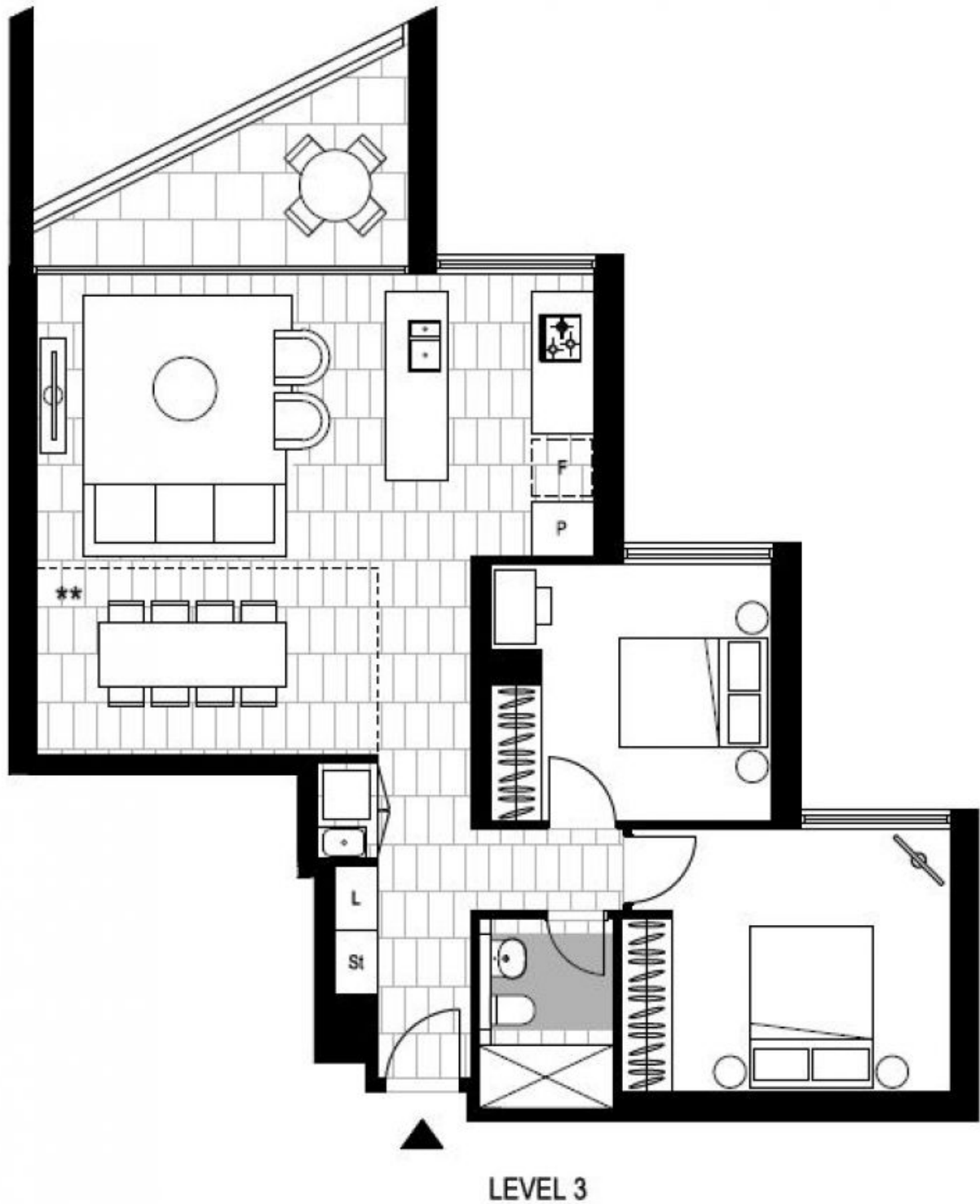
**\$900 per week | Deposit taken**

**Contact:** Naz Sabzpouri  
02 8588 8888  
0401 545 440

**Type:** Apartment

**Date Available:** 13/10/2022

**<https://www.resbymirvac.com>**



Plans shown are only indicative of layout. Dimensions are approximate.

**Glebe, NSW**  
309/6 Maxwell Road