



Glebe, NSW

501/5 Grattan Close

1
BED

1
BATH



Bright 1-Bedroom Apartment in Harold Park

Welcome to Harold Park, Glebe's Secret Backyard.

Here in Harold Park you will find yourself in an idyllic parkside location, with only a short walk to Glebe Foreshore. Just meters away, The Tramsheds retail precinct resides featuring cafes, a grocery store, restaurants and a medical centre.

This 5th floor Apartment features:

- Spacious bedroom with generous built-in wardrobe
- Open-plan living and dining area, leading to the balcony
- Modern kitchen with stone benchtop and Miele appliances
- Sleek bathroom with generous storage

\$620 per week | Deposit taken

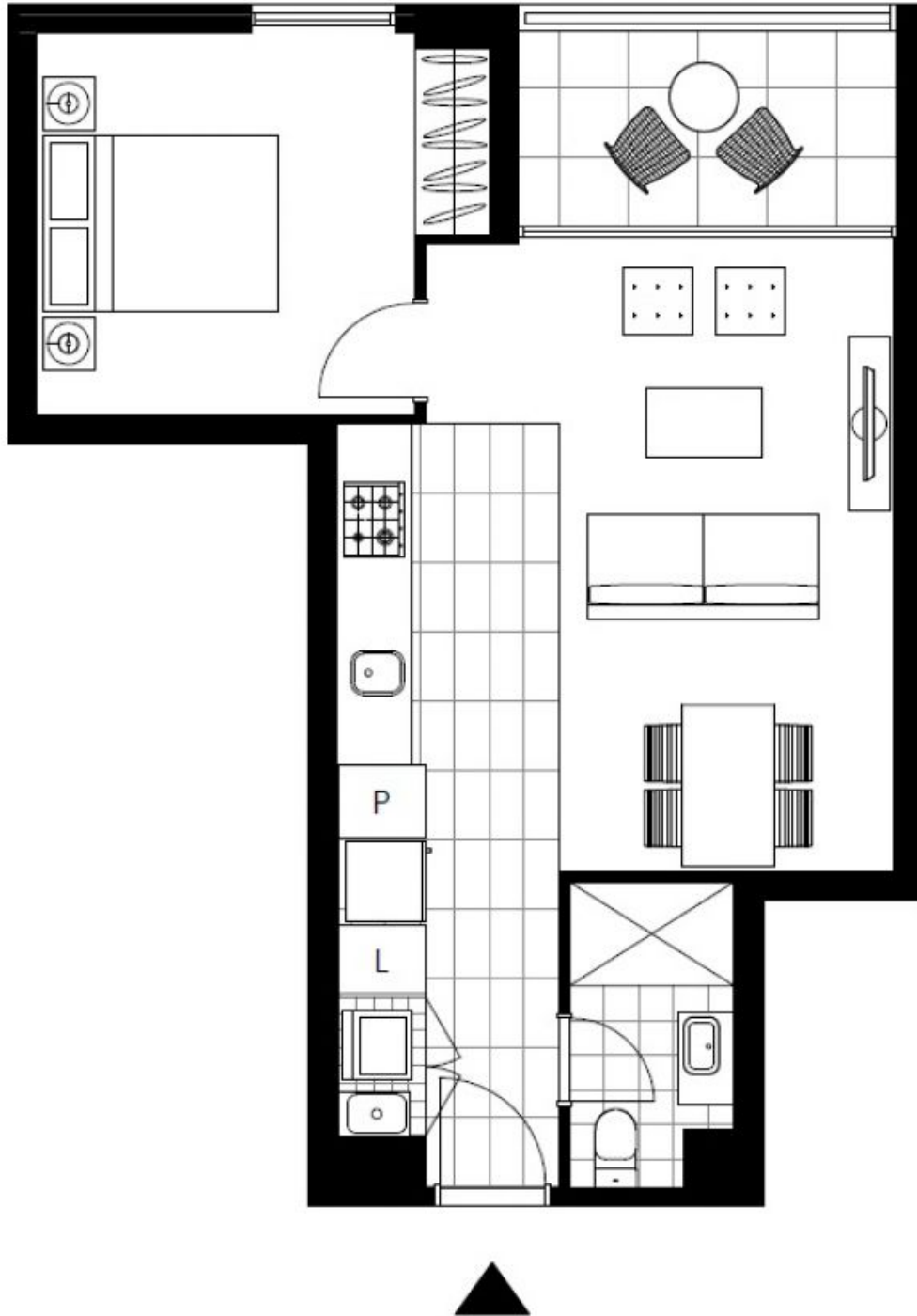
Contact: Naz Sabzpouri
02 8588 8888
0401 545 440

Type: Apartment

Date Available: 13/10/2022

Bond: \$2400

<https://www.resbymirvac.com>



Plans shown are only indicative of layout. Dimensions are approximate.

Glebe, NSW
501/5 Grattan Close