



Glebe, NSW
3505/21 Scotsman Street

1 BED **1** BATH



Stylish 1 Bedroom Apartment in Idyllic Parkside Location

Welcome to Harold Park, Glebe's Secret Backyard.

Here in Harold Park you will find yourself in an idyllic parkside location, with only a short walk to Glebe Foreshore. Just meters away, The Tramsheds retail precinct resides featuring cafes, a grocery store, restaurants and a medical centre.

This 62sqm, 5th floor apartment features:

- Well-appointed bedroom with floor-to-ceiling built-in wardrobe
- Open-plan living and dining area, leading to balcony
- Sleek kitchen with stone benchtop and built-in Miele appliances

\$620 per week | Deposit taken

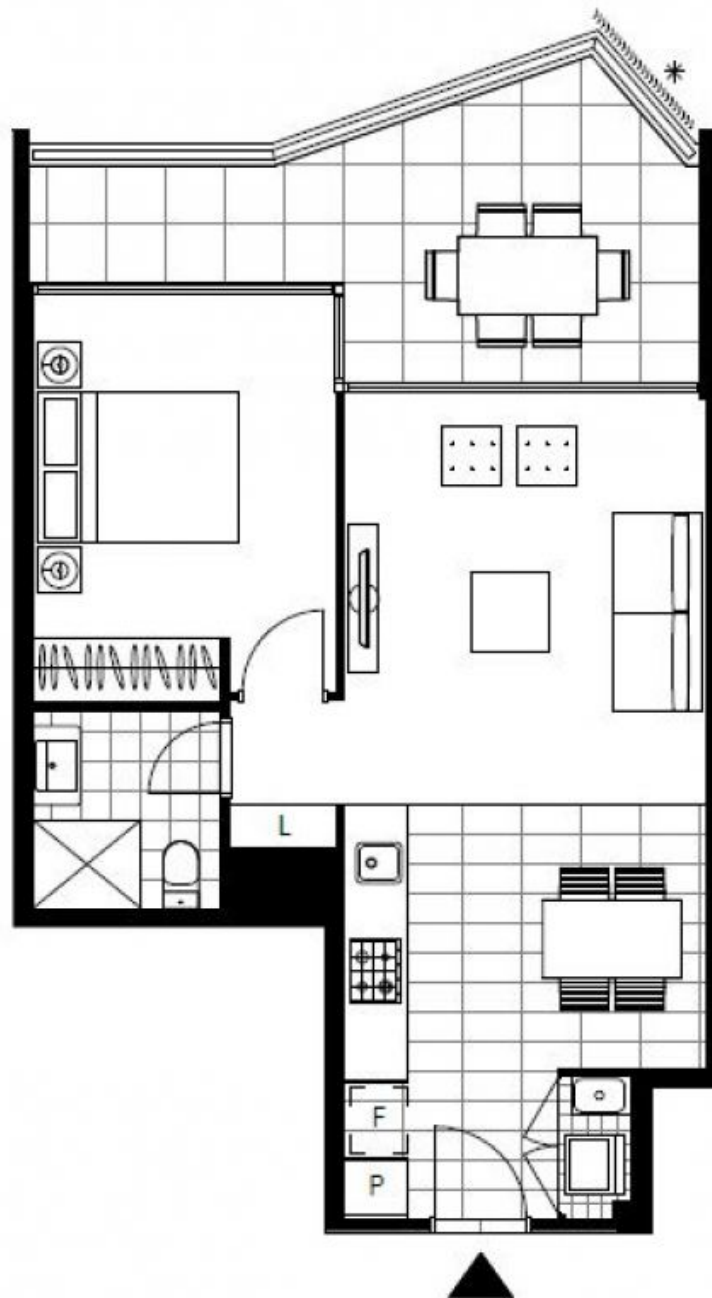
Contact: Naz Sabzpouri
02 8588 8888
0401 545 440

Type: Apartment

Date Available: 11/10/2022

Bond: \$2400

<https://www.resbymirvac.com>



Plans shown are only indicative of layout. Dimensions are approximate.

Glebe, NSW
3505/21 Scotsman Street