



Glebe, NSW

606/2 Scotsman Street

2 BED **2** BATH **1** CAR 

Stylish 6th floor Apartment with Views in Harold Park, Glebe.

Welcome to Harold Park!

Here in Harold Park you will find yourself in an idyllic park side location, with only a short walk to Glebe Foreshore. Just meters away, The Tramsheds retail precinct resides featuring cafes, a grocery store, restaurants and a medical centre.

This 6th floor apartment features:

- Generously appointed bedrooms with built-in wardrobes
- Functional living and dining area, ideal for entertaining
- Sleek kitchen with stone benchtop and built-in Miele appliances

\$895 per week | Deposit Taken

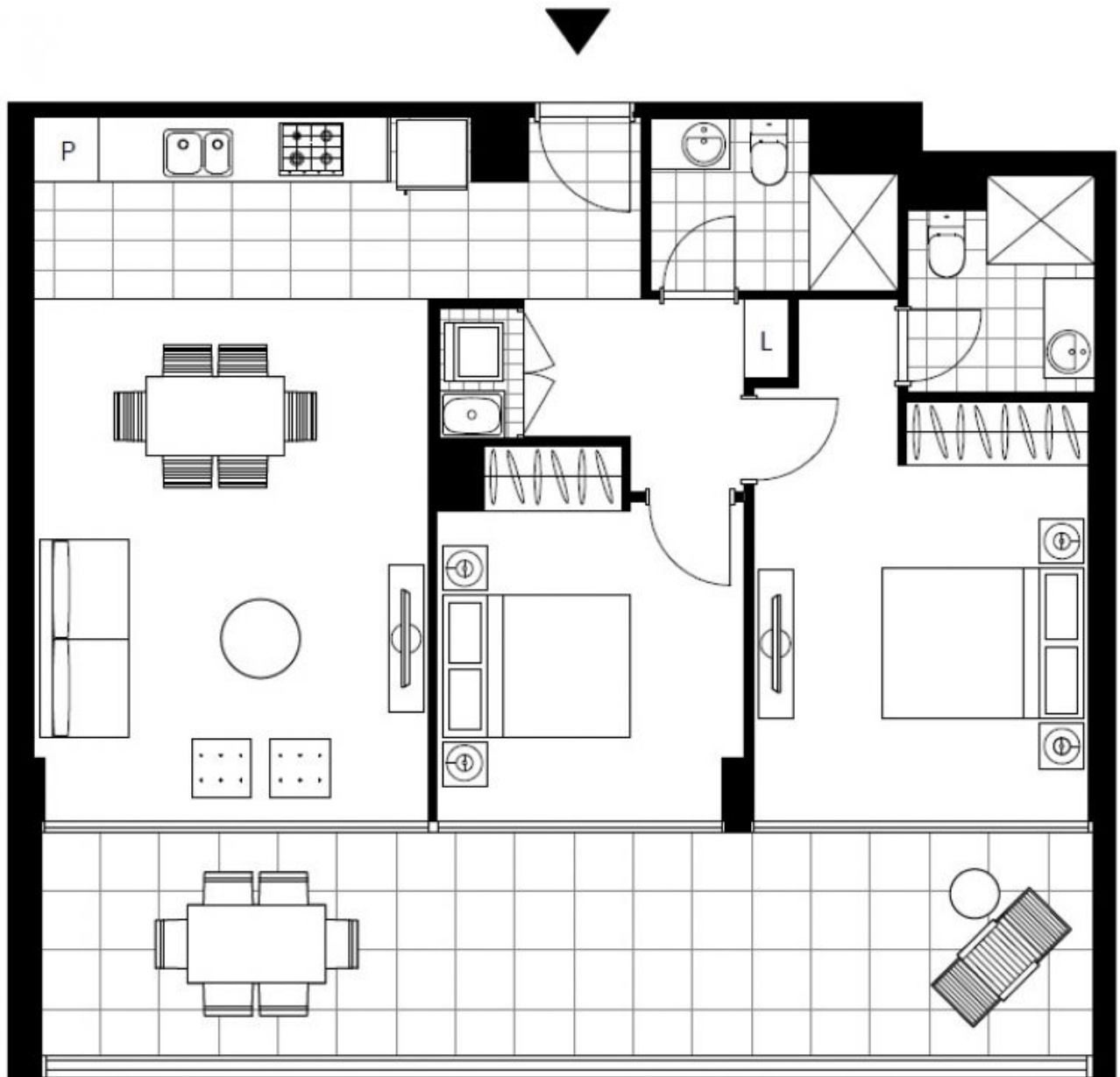
Contact: Naz Sabzpour
02 8588 8888
0401 545 440

Type: Apartment

Date Available: 17/10/2022

Bond: \$3660

<https://www.resbymirvac.com>



Plans shown are only indicative of layout. Dimensions are approximate.

Glebe, NSW
606/2 Scotsman Street