

Glebe, NSW

310/147 Ross Street

1
BED

1
BATH

1
CAR



Superb 1-Bedroom Apartment with Study Nook and Parking

Welcome to Harold Park, Glebe's Secret Backyard.

Here in Harold Park you will find yourself in an idyllic parkside location, with only a short walk to Glebe Foreshore. Just meters away, The Tramsheds retail precinct resides featuring cafes, a grocery store, restaurants and a medical centre.

This 'Chevalier' apartment features:

- Well-appointed bedroom with floor-to-ceiling built-in wardrobe
- Study nook at entry, perfect for a home office
- Flowing open-plan living and dining area, with access to balcony

\$650 per week | Deposit taken!

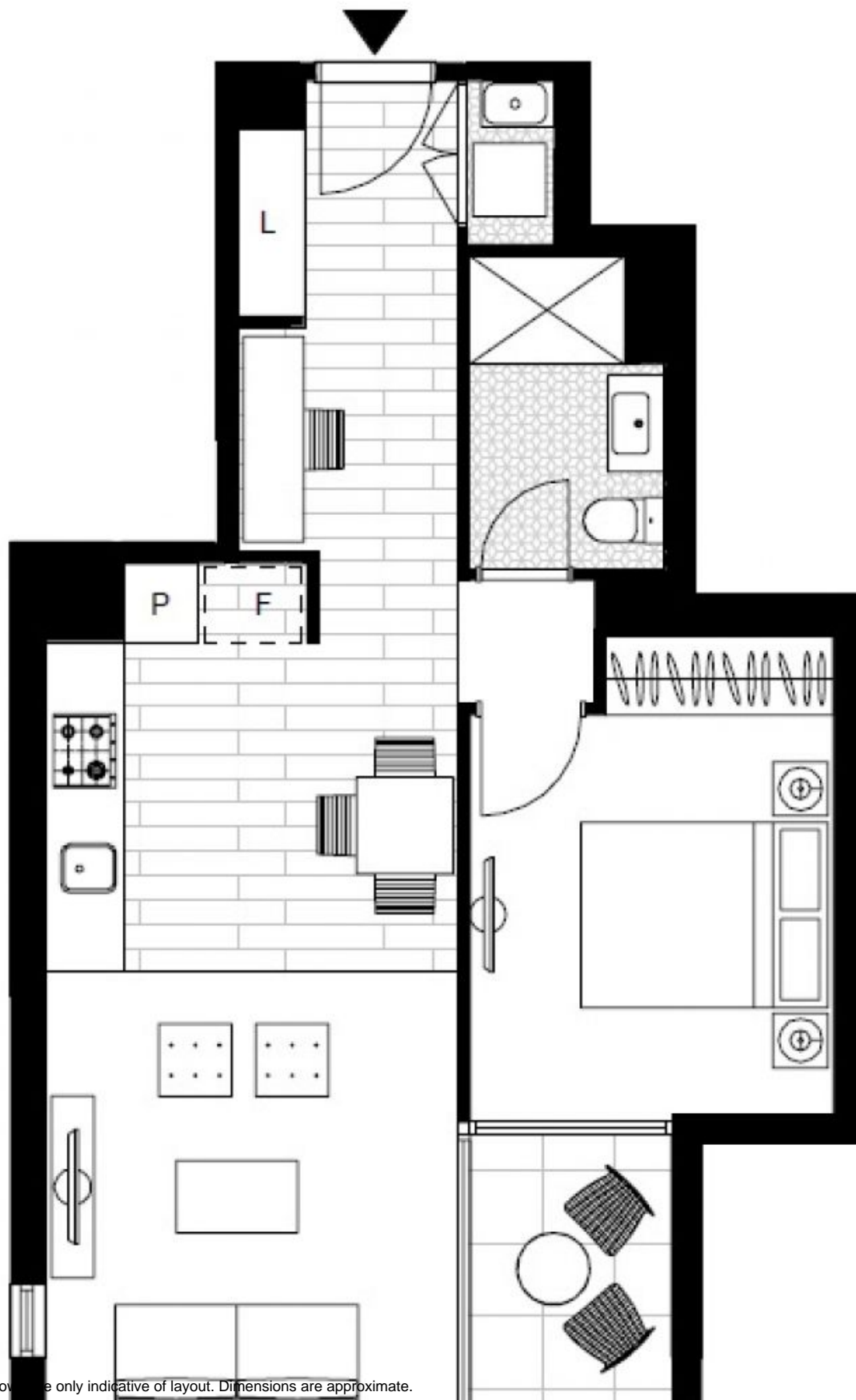
Contact: Naz Sabzpouri
02 8588 8888
0401 545 440

Type: Apartment

Date Available: 08/10/2022

Bond: \$2600

<https://www.resbymirvac.com>



Plans shown are only indicative of layout. Dimensions are approximate.

Glebe, NSW
310/147 Ross Street