

**Glebe, NSW**  
310/147 Ross Street

**1** BED  
**1** BATH  
**1** CAR

**RES** real estate services by mirvac

### Superb 1-Bedroom Apartment with Study Nook and Parking

Welcome to Harold Park, Glebe's Secret Backyard.

Here in Harold Park you will find yourself in an idyllic parkside location, with only a short walk to Glebe Foreshore. Just meters away, The Tramsheds retail precinct resides featuring cafes, a grocery store, restaurants and a medical centre.

This 'Chevalier' apartment features:

- Well-appointed bedroom with floor-to-ceiling built-in wardrobe
- Study nook at entry, perfect for a home office
- Flowing open-plan living and dining area, with access to balcony

**\$650 per week | Deposit taken!**

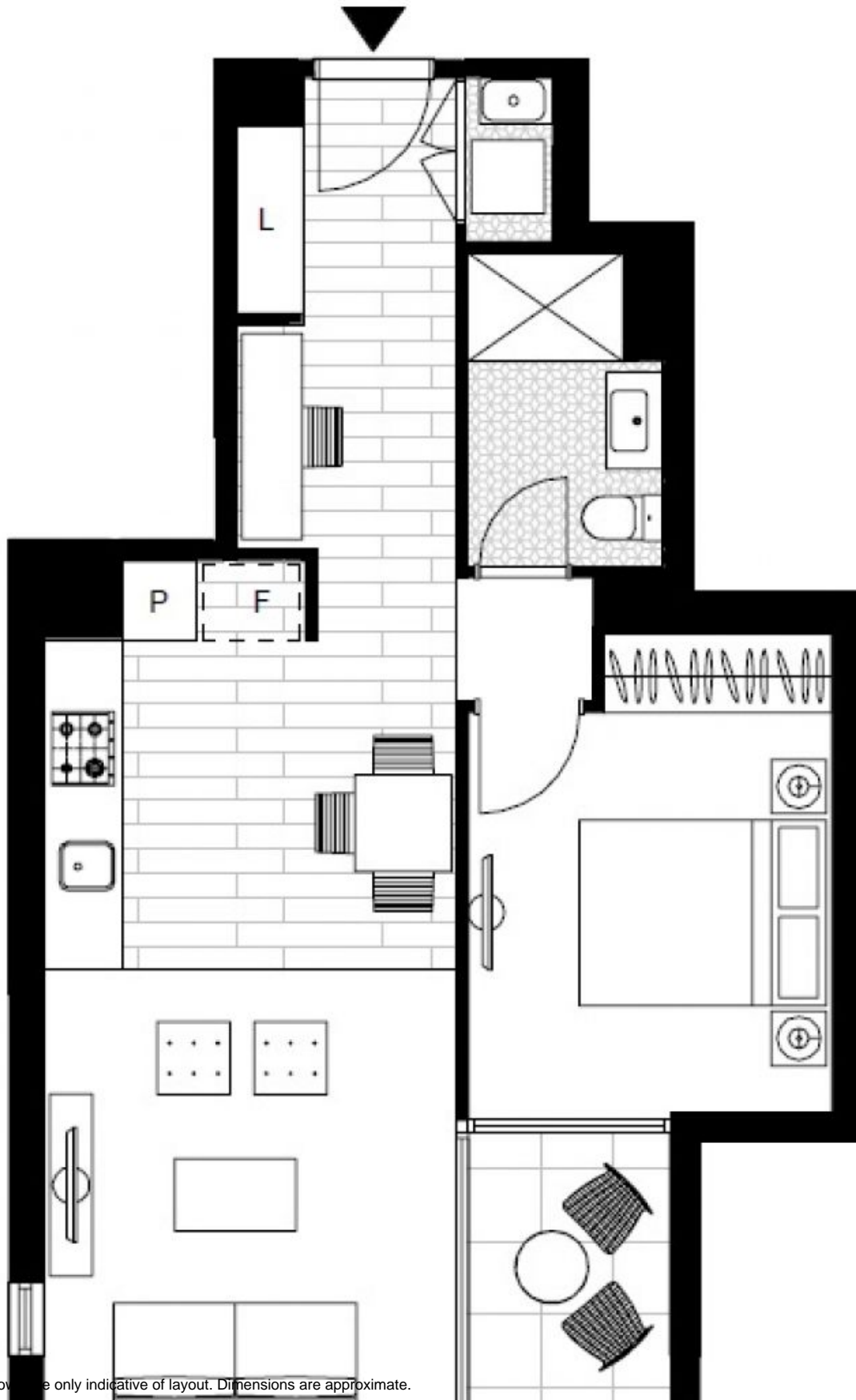
**Contact:** Naz Sabzpouri  
02 8588 8888  
0401 545 440

**Type:** Apartment

**Date Available:** 08/10/2022

**Bond:** \$2600

<https://www.resbymirvac.com>



Plans shown are only indicative of layout. Dimensions are approximate.

**Glebe, NSW**  
310/147 Ross Street