



**Glebe, NSW**  
5701/148 Ross Street

**1** BED **1** BATH



**Luxe contemporary living with generous balcony for entertaining**

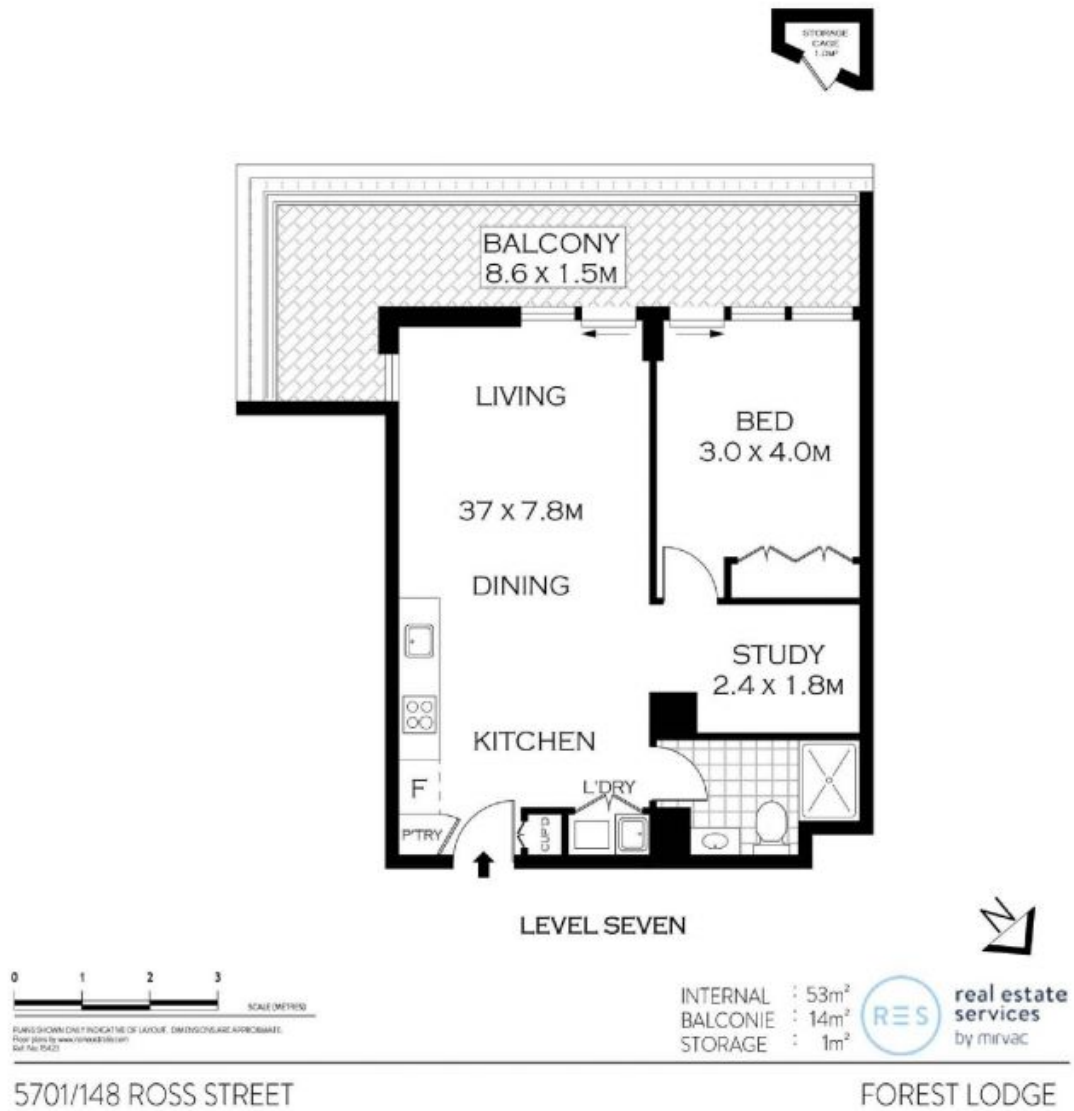
Boasting a full-width return balcony for glorious indoor/outdoor living and entertaining, this apartment is the perfect pad for first home buyers, investors those seeking a city base. Step out onto the balcony from the living space or bedroom and enjoy views of the manicured gardens of this popular Harold Park development. Stroll to buses, light rail and the lively Tramsheds in minutes.

- ? Clean lines, neutral tones, quality finishes, contemporary living
- ? Open plan kitchen and roomy living/dining flows to balcony
- ? Stone kitchen, gas stainless steel Miele appliances, dishwasher
- ? Generous bedroom with a built-in robe and access to balcony
- ? Stylish fully tiled bathroom, internal laundry, air conditioning

**Sold \$725,000**

**Council Rates:** \$286/qtr (approx)  
**Strata Rates:** \$949/qtr (approx)  
**Contact:** William Kwok  
 0285888888  
 0481 702 370  
 William Kwok  
 0285888888  
 0481 702 370

**Type:** Apartment  
**Sold Date:** 21/11/2022  
**Land:** 67Square Metres  
<https://www.resbymirvac.com>



Plans shown are only indicative of layout. Dimensions are approximate.

**Glebe, NSW**  
5701/148 Ross Street