



Docklands, VIC

702/1 Point Park Crescent

1 BED **1** BATH **1** CAR 

Perfect living at Yarra's Edge!

Welcome to Yarra's Edge, Docklands' most prestigious riverside community,

Here in Yarra's Edge you will find yourself in an perfectly positioned waterfront location, only moments away from an array of cafes, restaurants, parks, Yarra's Edge promenade and IGA supermarket. With access to an array of communal facilities including; pool, spa, gym, sauna and residents lounge this is a lifestyle of distinction.

This 1 Bedroom, 1 Bathroom, 1 Car Space apartment features;
River front apartment overlooking marina and city
Spacious living and dining area with access to balcony
Stylish main bathroom

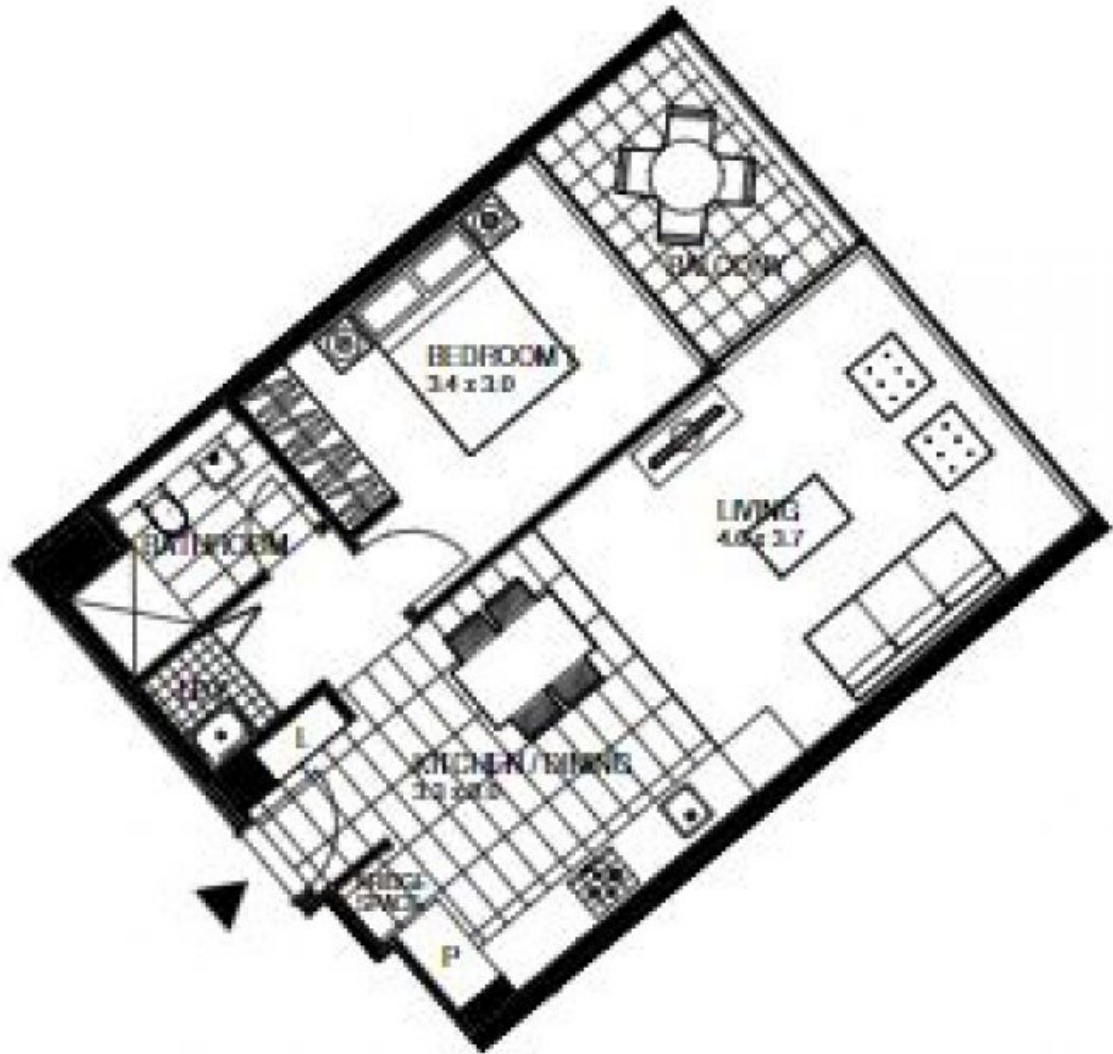
\$500 per week

Contact: Aleiasha Clark
03 9645 1199
0491 174 507

Type: Apartment

Date Available: 18/10/2022

<https://www.resbymirvac.com>



Plans shown are only indicative of layout. Dimensions are approximate.

Docklands, VIC
702/1 Point Park Crescent