



Docklands, VIC
1302/60 Lorimer Street

2 BED **1** BATH **1** CAR 

Light filled two bedroom apartment in the heart of Yarra's Edge

Welcome to Yarra's Edge, Docklands' most prestigious riverside community.

Here in Yarra's Edge you will find yourself in an perfectly positioned waterfront location, only moments away from an array of cafes, restaurants, parks, Yarra's Edge promenade and IGA supermarket.

This 2 Bedroom, 1 Bathroom, 1 Car Space apartment features:
Northern aspect overlooking the Yarra's Edge marina
Open plan living and dining experience flowing to balcony
2 generous bedrooms overlooking the marina
European kitchen appliances

MARINA VIEWS | \$630PW

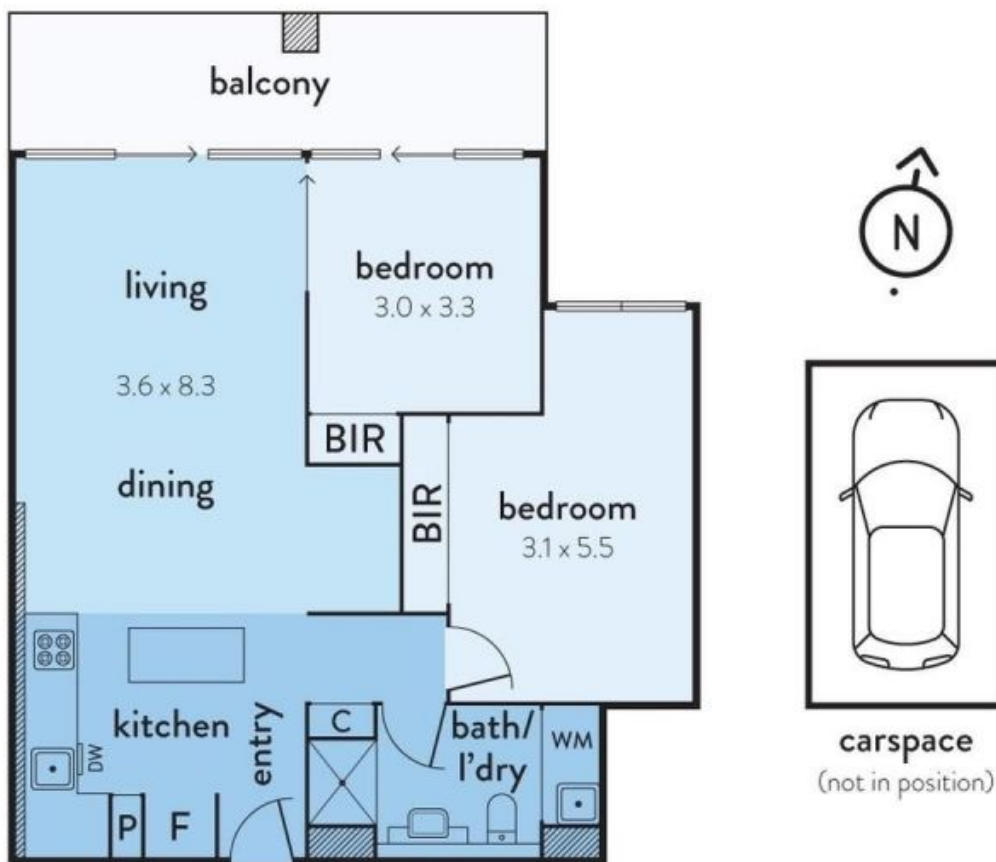
Contact: Aleiasha Clark
03 9645 1199
0491 174 507

Type: Apartment

Date Available: 07/10/2020

<https://www.resbymirvac.com>

1302/60 LORIMER STREET, DOCKLANDS



real estate
services
by mirvac

Plans shown are only indicative of layout. Dimensions are approximate.

The above plan is an artist's impression only, it includes elements that are for display purposes and may not be to scale. Dimensions are approximate and every care has been taken to verify the accuracy of details.

Docklands, VIC
1302/60 Lorimer Street