



Docklands, VIC
705/100 Lorimer Street

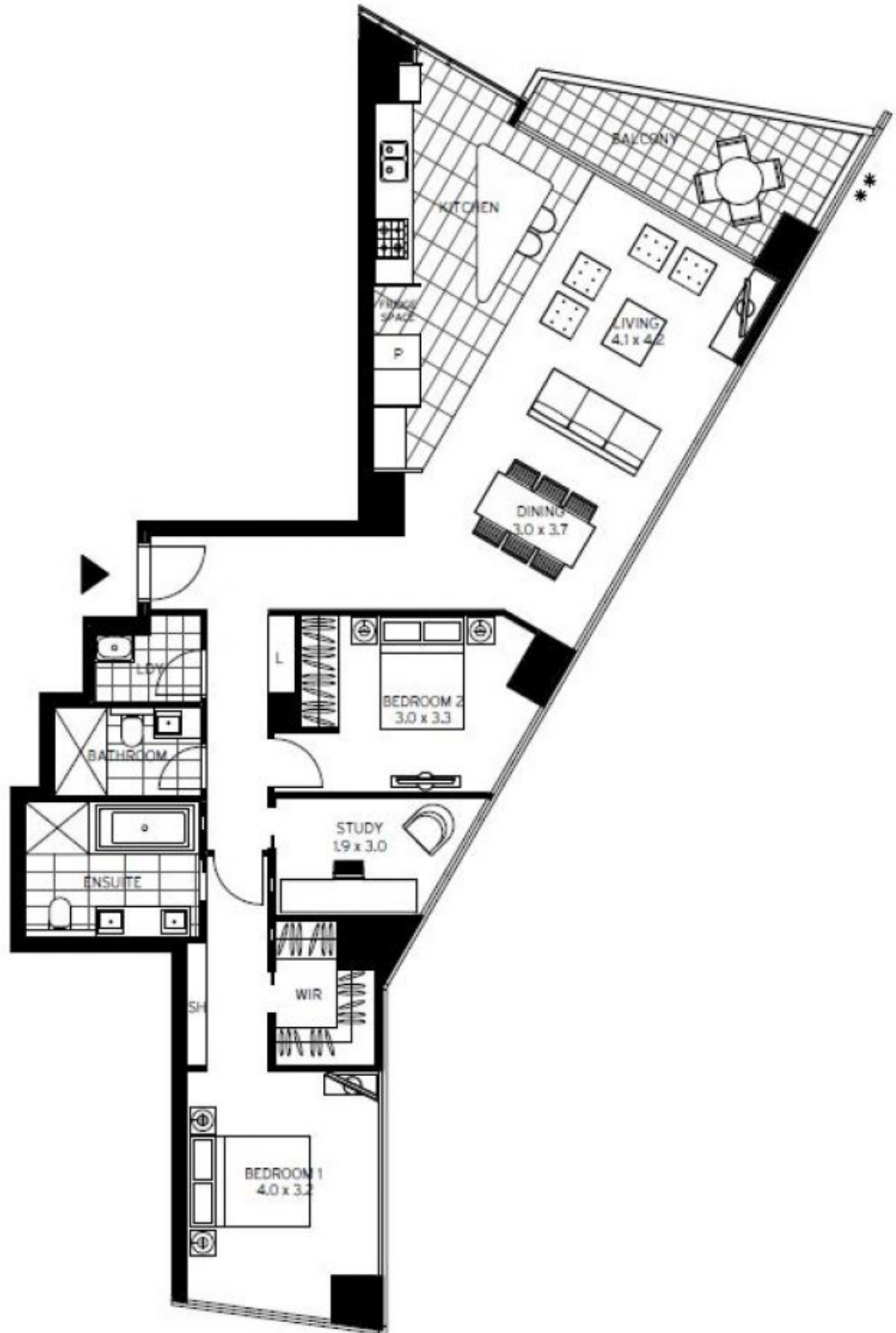
2 BED **2** BATH **2** CAR



Waterfront Brilliance in Array Complex
Be swept away by everything Melbourne with amazing views of Port Philip Bay, the CBD, Yarra River, and Docklands. Overlooking the marina on Yarra's Edge, sits this sumptuous 131 square metre apartment in Mirvac's sought-after Array.

\$1,100,000 - \$1,150,000
Contact: Andrew Chen
03 9645 1199
0490 816 861
Type: Apartment
<https://www.resbymirvac.com>

- ? Floor to ceiling windows throughout presenting fantastic panoramic views, space, style, quality
- ? Open plan living, dining and kitchen, contemporary home and generous balcony size
- ? Additional features: Built in fridge/freezer, Miele dishwasher, oven and microwave
- ? Large kitchen island bench, smart cupboard space, stone benchtops, stainless steel appliances



Plans shown are only indicative of layout. Dimensions are approximate.

Docklands, VIC
705/100 Lorimer Street