



## Doncaster, VIC

113/65 Stables Circuit

**1** BED **1** BATH **1** CAR



### Apartments of Phoenix Tullamore- Tranquil oasis

The Phoenix is Tullamores premier residential apartment complex, with lush parkland on its doorstep; where style, privacy and timeless design blends with nature, beauty and freedom. Unique, exclusive and limited, this is a lifestyle of distinction ready for the most discerning of residents.

This beautifully designed 1bedroom apartment features:

- ? Bespoke design & finishes, open plan of the living & dining space
- ? Large internal space of 50m2
- ? Generous balcony 11m2
- ? Storage cage & car parking space
- ? Stainless steel Miele appliances including integrated dishwasher
- ? Generous cupboard space
- ? Floor to ceiling windows

**\$420,000**

**Council Rates:** \$1,000/year (approx)

**Contact:** Andrew Chen  
03 9645 1199  
0490 816 861  
Joe Qiao  
03 9645 1199  
0408 288 542

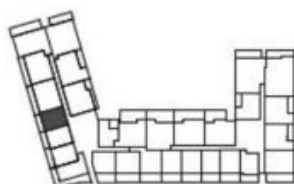
**Type:** Apartment

**Sold Date:** 21/07/2023

<https://www.resbymirvac.com>



1 1 1



DONCASTER ROAD

## LEVEL 1

INTERNAL: 50m<sup>2</sup>

BALCONY: 11m<sup>2</sup>

CARSPACE: 1

STORAGE CAGE: Yes

AMENITY: Teppanyaki grill and Dining area

Please note that this floor plan is a guide only.  
The information contained herein is not  
guaranteed. Dimensions are approximate.  
Prospective purchasers must rely on their own  
enquiries.



**real estate  
services**  
by mirvac

## 113/65 Stables Circuit

**Doncaster**

Plans shown are only indicative of layout. Dimensions are approximate.

**Doncaster, VIC**  
113/65 Stables Circuit