



**Docklands, VIC**  
3004/70 Lorimer Street

**3** BED   **2** BATH   **3** CAR



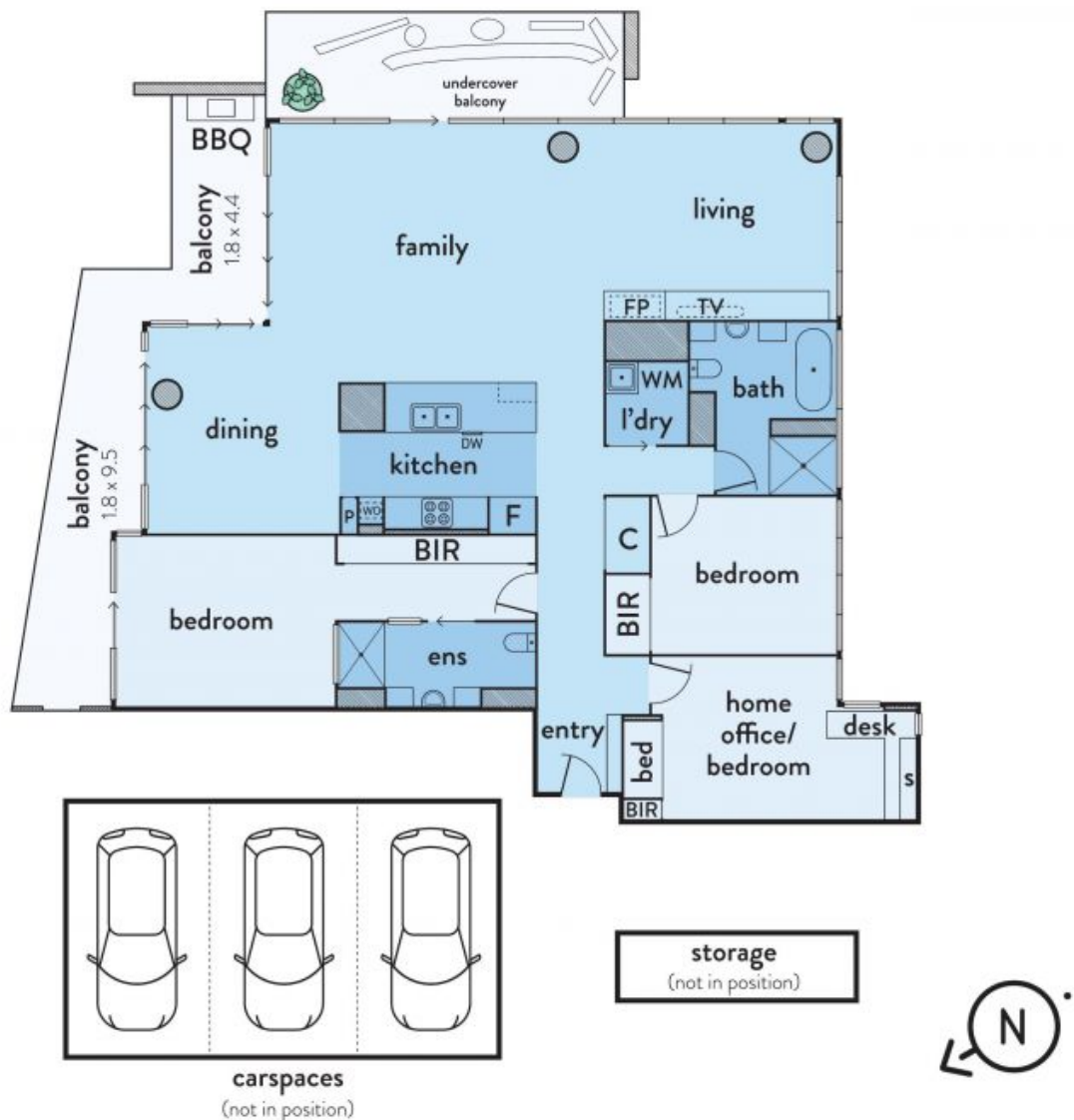
**Stunning sub-penthouse apartment is an architectural marvel**

Showcasing incredible panoramic views of the Yarra's edge Marina, Port Phillip Bay and the Melbourne skyline, this stunning penthouse apartment delivers luxurious Tower 3 living. Impeccably renovated by Ha Architecture, the 3-bedroom residence delivers 223 sqm (approx.) of total space, with the expansive central living space opening out to a Japanese garden and a sweeping North facing balcony. With access to a range of residential facilities and 3 parking spaces, it presents a peerless lifestyle opportunity in a sought-after inner city position.

? Gaze out to the spectacular, must-see views of downtown Melbourne ? 'Move in and nothing needs to be done'. Renovated by Ha Architecture to exacting standards, the redesigned residence features Asian influences, ample natural light and inspired ideas

**\$2,400,000**  
**Council Rates:** \$3,200/year (approx)  
**Contact:** Andrew Chen  
 03 9645 1199  
 0490 816 861  
 Andrew Chen  
 03 9645 1199  
 0490 816 861  
**Type:** Apartment  
**Sold Date:** 10/11/2023  
<https://www.resbymirvac.com>

# 3004/70 LORIMER STREET, DOCKLANDS



Plans shown are only indicative of layout. Dimensions are approximate.

The above plan is an artist's impression only, it includes elements that are for display purposes and may not be to scale. Dimensions are approximate and every care has been taken to verify the accuracy of details.

**Docklands, VIC**  
3004/70 Lorimer Street