



Glebe, NSW

509/119 Ross Street

1
BED

1
BATH



Contemporary lifestyle address near walking tracks and cafes

With a long entrance hallway creating an extra sense of privacy, this apartment promises sleek and stylish living in the sought-after Harold Park development. It embraces a vast open plan indoor/outdoor design with a covered terrace for alfresco entertaining. Promoting an active and social lifestyle, it's a stroll to recreational facilities and cosmopolitan attractions.

- ? Long entrance hallway leads to roomy living/dining area
- ? Fully tiled living room, bespoke TV unit and curtains
- ? Step out onto covered terrace for alfresco entertaining
- ? Stone kitchen, gas cooking, Miele appliances, dishwasher
- ? Generous bedroom with built-in robe, fully tiled bathroom
- ? Ducted air conditioning, secure entrance, internal laundry

SOLD \$715,000

Council Rates: \$286/qtr (approx)

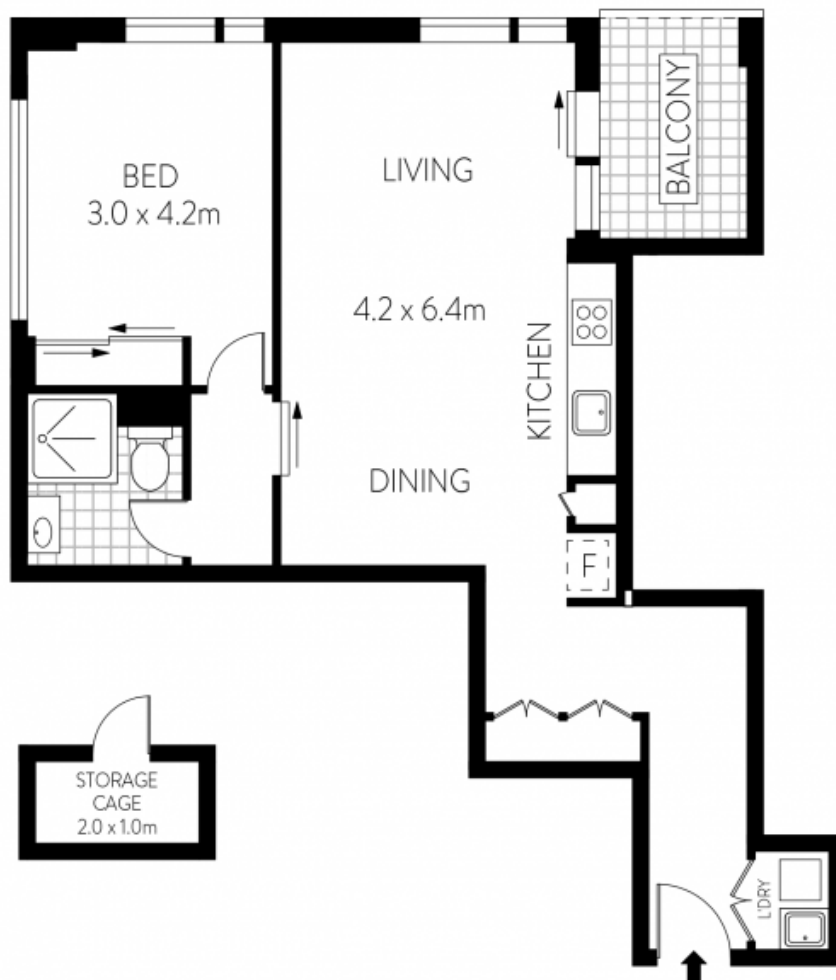
Strata Rates: \$744/qtr (approx)

Contact: Matthew Matthews
02 8588 8888
0418 266 590
William Kwok
0285888888
0481 702 370

Type: Apartment

Sold Date: 17/10/2022

<https://www.resbymirvac.com>



LEVEL FIVE



PLANS SHOWN ONLY INDICATIVE OF LAYOUT. DIMENSIONS ARE APPROXIMATE.
Floor plans by www.renaustralia.com
Ref. No: 15374

INTERNAL : 56m²
BALCONY : 5m²
STORAGE : 2m²



509/119 ROSS STREET

FOREST LODGE

Plans shown are only indicative of layout. Dimensions are approximate.

Glebe, NSW
509/119 Ross Street