



Glebe, NSW
410/147 Ross Street

1 BED **1** BATH

RES real estate services by mirvac

Stylish 1 Bedroom Apartment in Idyllic Parkside Location

Welcome to Harold Park, Glebe's Secret Backyard.

Here in Harold Park you will find yourself in an idyllic parkside location, with only a short walk to Glebe Foreshore. Just meters away, The Tramsheds retail precinct resides featuring cafes, a grocery store, restaurants and a medical centre.

This 4th floor, 'Chevalier' apartment features:

- Generous bedroom with built-in wardrobe
- Bright open-plan living and dining area, flowing onto balcony
- Sleek kitchen with stone benchtop and integrated Miele appliances

\$620 per week | Deposit taken

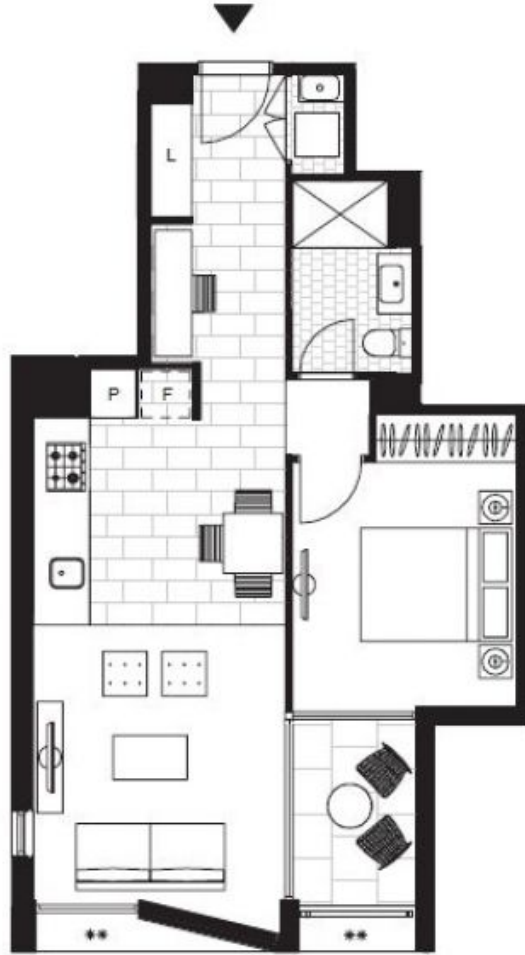
Contact: Naz Sabzpour
02 8588 8888
0401 545 440

Type: Apartment

Date Available: 08/09/2022

Bond: \$2480

<https://www.resbymirvac.com>



LEVEL 4,6

Plans shown are only indicative of layout. Dimensions are approximate.

Glebe, NSW
410/147 Ross Street