



Glebe, NSW

401/5 Grattan Close

1
BED

1
BATH



Contemporary 1 Bedroom Apartment in 'Locarno', Harold Park

Welcome to Harold Park, Glebe's Secret Backyard.

Here in Harold Park you will find yourself in an idyllic parkside location, with only a short walk to Glebe Foreshore. Just meters away, The Tramsheds retail precinct resides featuring cafes, a grocery store, restaurants and a medical centre.

4th floor apartment features:

- Spacious bedroom with built-in wardrobe
- Open-plan living and dining area flowing onto internal garden facing balcony

\$595 per week | Deposit Taken

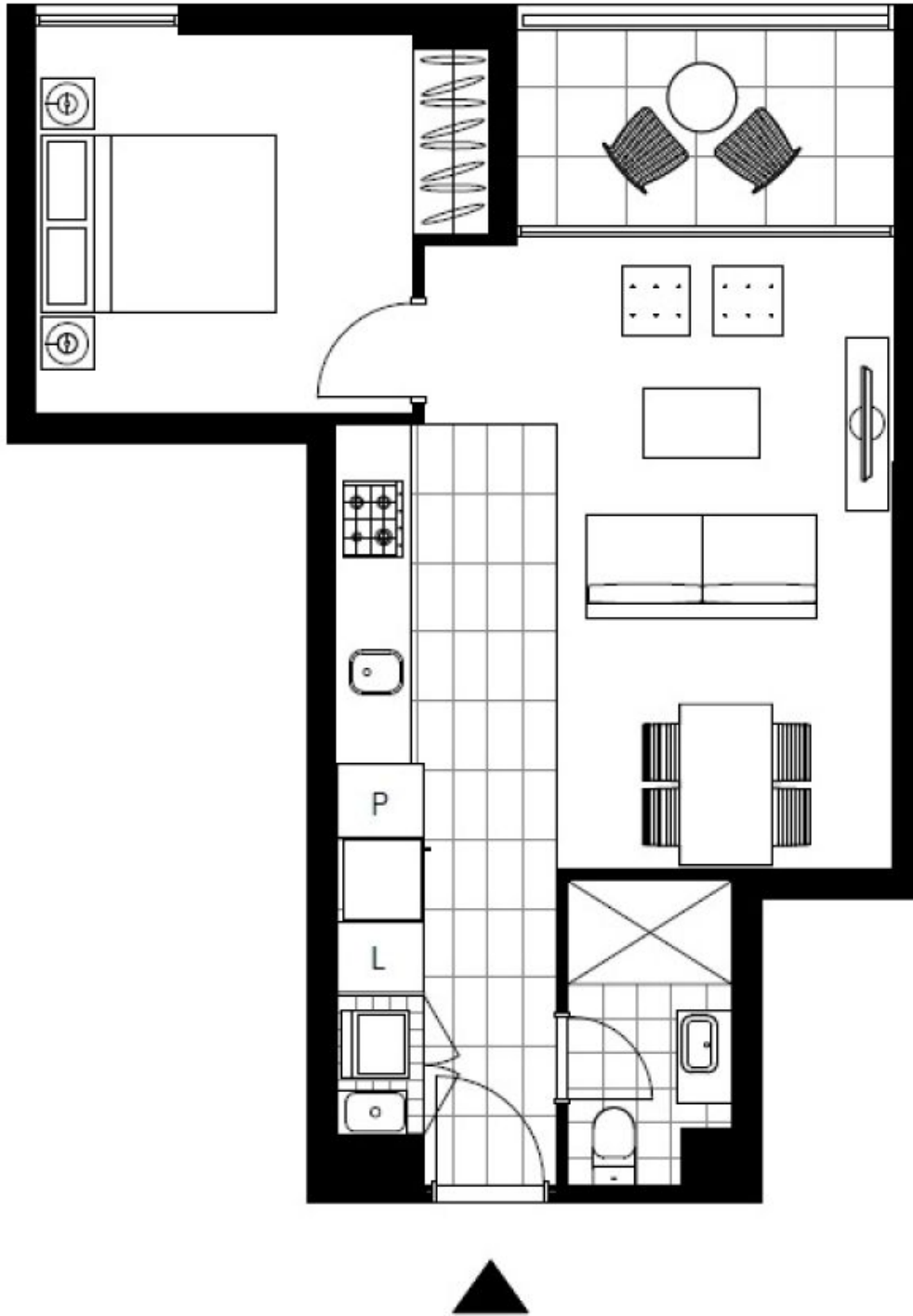
Contact: Naz Sabzpouri
02 8588 8888
0401 545 440

Type: Apartment

Date Available: 06/09/2022

Bond: \$2380

<https://www.resbymirvac.com>



Plans shown are only indicative of layout. Dimensions are approximate.

Glebe, NSW
401/5 Grattan Close