



## Glebe, NSW

401/5 Grattan Close

**1**  
BED

**1**  
BATH



### Contemporary 1 Bedroom Apartment in 'Locarno', Harold Park

Welcome to Harold Park, Glebe's Secret Backyard.

Here in Harold Park you will find yourself in an idyllic parkside location, with only a short walk to Glebe Foreshore. Just meters away, The Tramsheds retail precinct resides featuring cafes, a grocery store, restaurants and a medical centre.

4th floor apartment features:

- Spacious bedroom with built-in wardrobe
- Open-plan living and dining area flowing onto internal garden facing balcony

**\$595 per week | Deposit Taken**

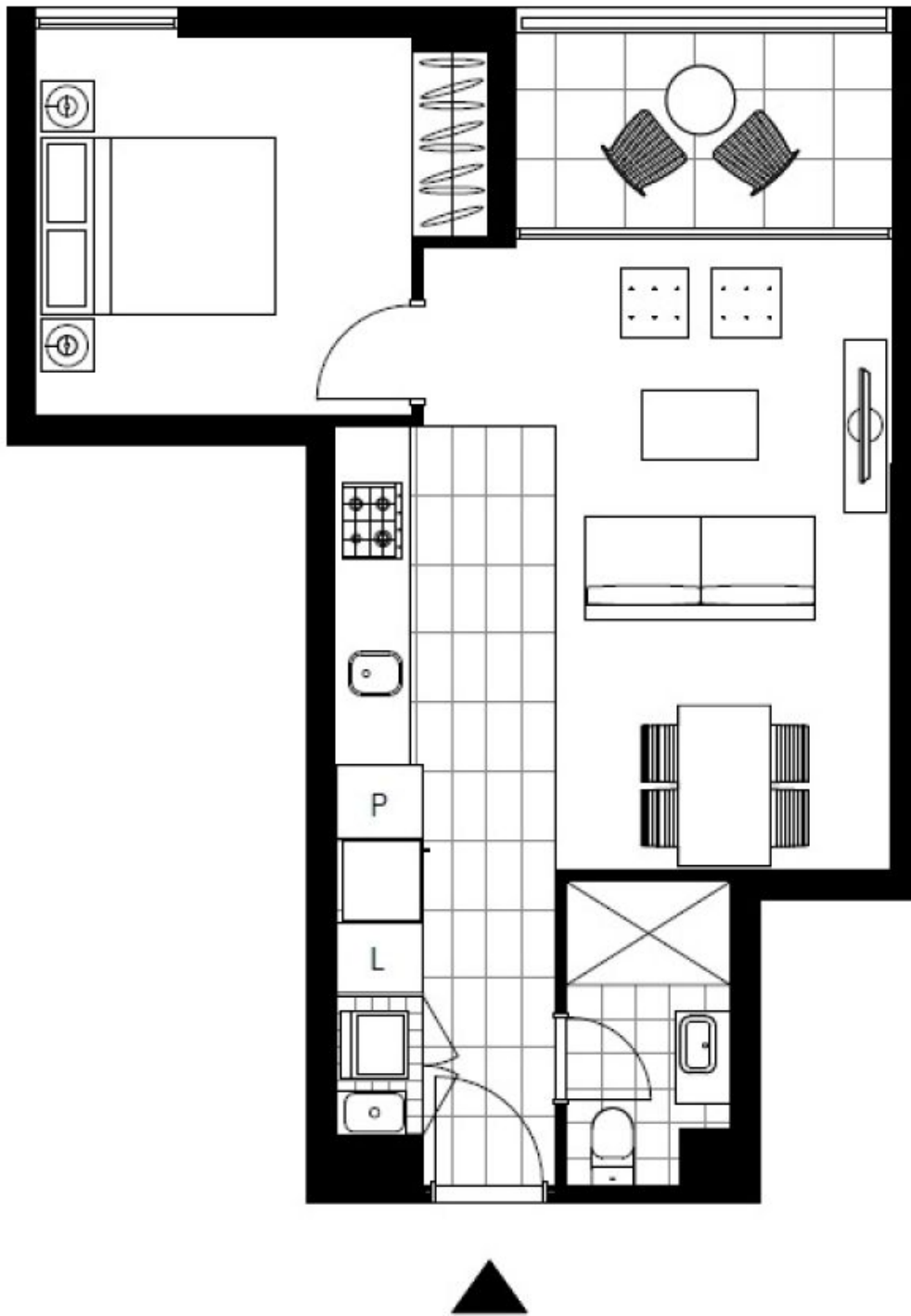
**Contact:** Naz Sabzpouri  
02 8588 8888  
0401 545 440

**Type:** Apartment

**Date Available:** 06/09/2022

**Bond:** \$2380

<https://www.resbymirvac.com>



Plans shown are only indicative of layout. Dimensions are approximate.

**Glebe, NSW**  
401/5 Grattan Close