

**Glebe, NSW**  
307/1 Cullen Close

**1** BED **1** BATH **1** CAR 

**Contemporary 1-Bedroom Apartment with Parking in Harold Park, Glebe**

Welcome to Harold Park, Glebe's Secret Backyard.

Here in Harold Park you will find yourself in an idyllic parkside location, with only a short walk to Glebe Foreshore. Just meters away, The Tramsheds retail precinct resides featuring cafes, a grocery store, restaurants and a medical centre.

This 60sqm, Mirvac apartment features:

- Generous bedroom with built-in wardrobes
- Open-plan living and dining area, flowing onto balcony
- Sleek quality kitchen with stone benchtop and built-in Miele appliances

**\$700 per week | Deposit taken**

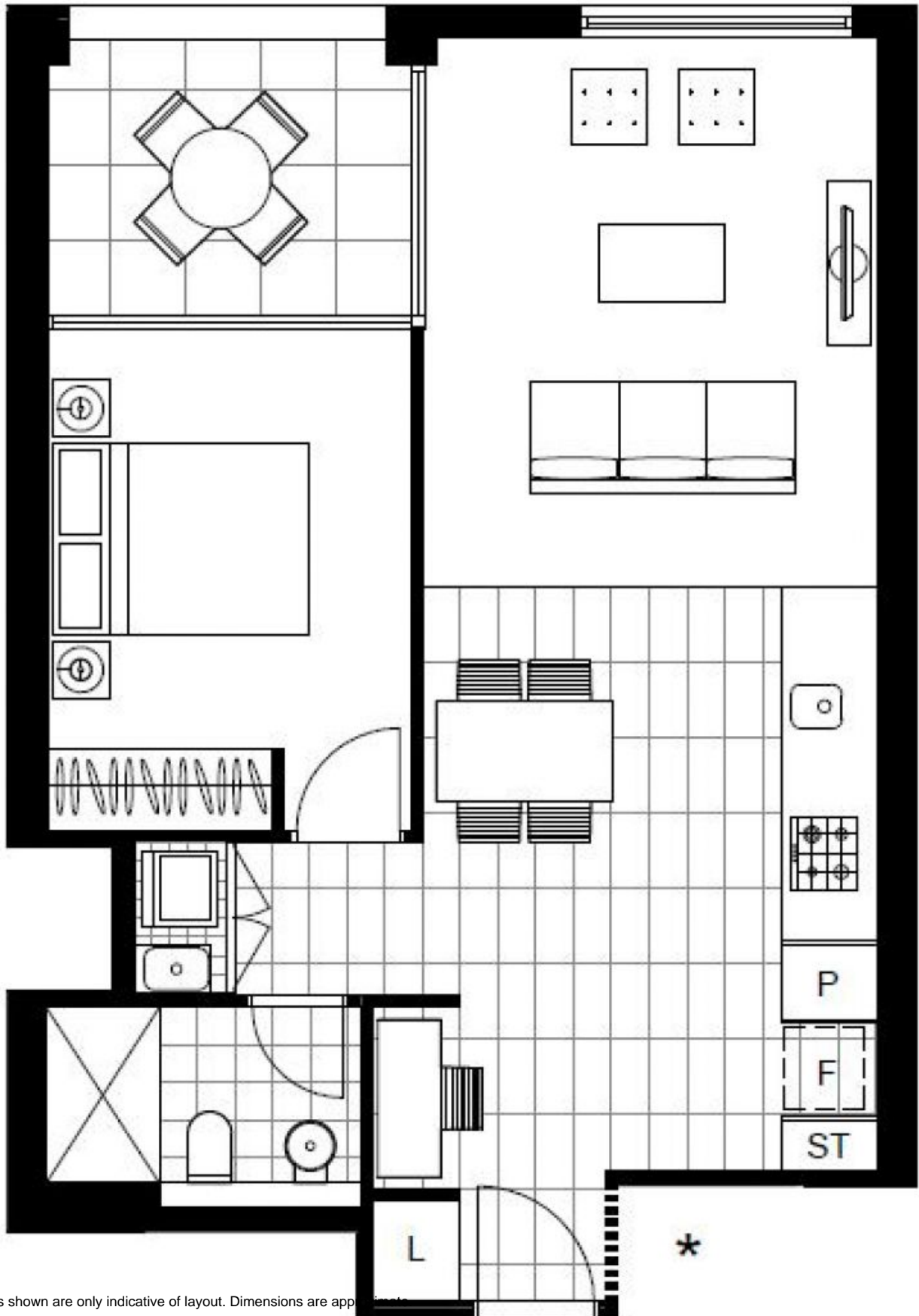
**Contact:** Naz Sabzpouri  
02 8588 8888  
0401 545 440

**Type:** Apartment

**Date Available:** 03/09/2022

**Bond:** \$2800

<https://www.resbymirvac.com>



Plans shown are only indicative of layout. Dimensions are approximate.

**Glebe, NSW**  
307/1 Cullen Close