

Glebe, NSW
307/1 Cullen Close

1 BED **1** BATH **1** CAR



Contemporary 1-Bedroom Apartment with Parking in Harold Park, Glebe

Welcome to Harold Park, Glebe's Secret Backyard.

Here in Harold Park you will find yourself in an idyllic parkside location, with only a short walk to Glebe Foreshore. Just meters away, The Tramsheds retail precinct resides featuring cafes, a grocery store, restaurants and a medical centre.

This 60sqm, Mirvac apartment features:

- Generous bedroom with built-in wardrobes
- Open-plan living and dining area, flowing onto balcony
- Sleek quality kitchen with stone benchtop and built-in Miele appliances

\$700 per week | Deposit taken

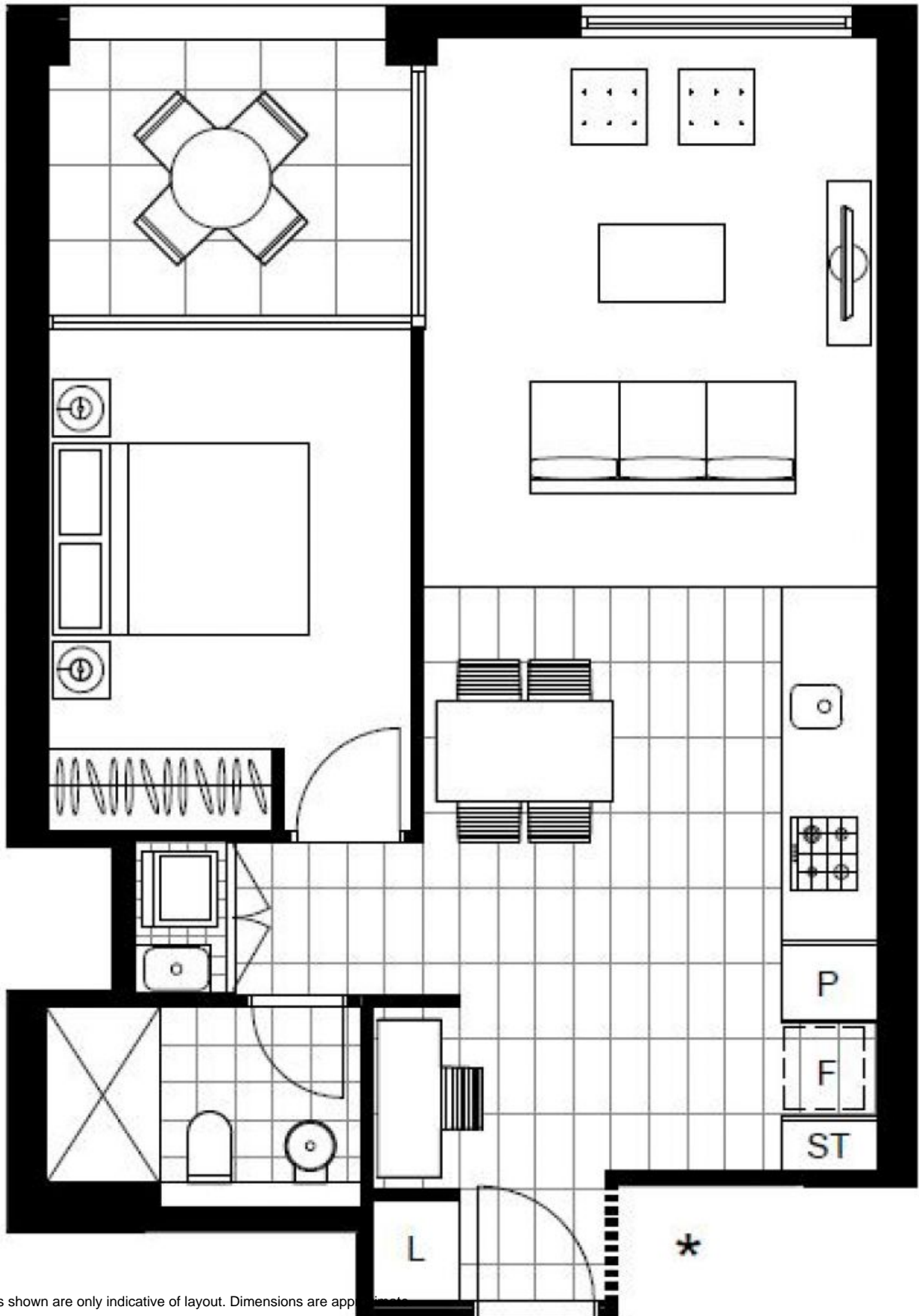
Contact: Naz Sabzpouri
02 8588 8888
0401 545 440

Type: Apartment

Date Available: 03/09/2022

Bond: \$2800

<https://www.resbymirvac.com>



Plans shown are only indicative of layout. Dimensions are approximate.

Glebe, NSW
307/1 Cullen Close