



## Glebe, NSW

607/170 Ross Street

**2**  
BED

**1**  
BATH

**1**  
CAR



### Premium 2 Bedroom Apartment + Parking in 'Vance', Harold Park

Welcome to Harold Park, Glebe's Secret Backyard.

Here in Harold Park you will find yourself in an idyllic parkside location, with only a short walk to Glebe Foreshore. Just meters away, The Tramsheds retail precinct resides featuring cafes, a grocery store, restaurants and a medical centre.

This 81sqm, 6th floor apartment features:

- Two well-appointed bedrooms with floor-to-ceiling built-in wardrobes
- Bright open-plan living and dining area, flowing onto balcony
- Sleek kitchen with stone benchtop and integrated Miele appliances

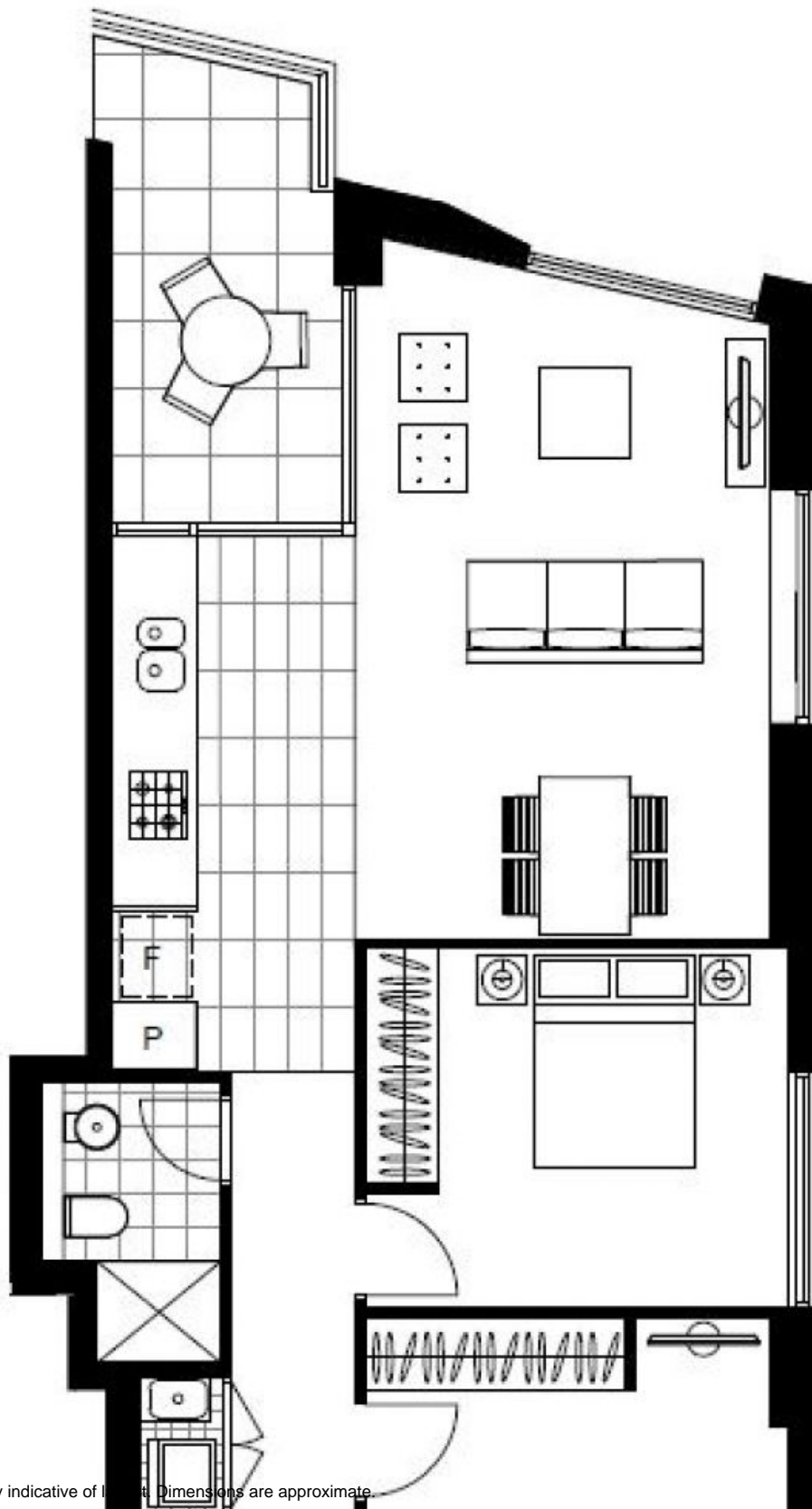
### Deposit taken

**Contact:** Naz Sabzpouri  
02 8588 8888  
0401 545 440

**Type:** Apartment

**Date Available:** 03/09/2022

**<https://www.resbymirvac.com>**



Plans shown are only indicative of layout. Dimensions are approximate.

**Glebe, NSW**  
607/170 Ross Street