



Glebe, NSW
23 Minogue Crescent

1 BED **1** BATH



First Home Buyers Dream : Private access to gorgeous terrace

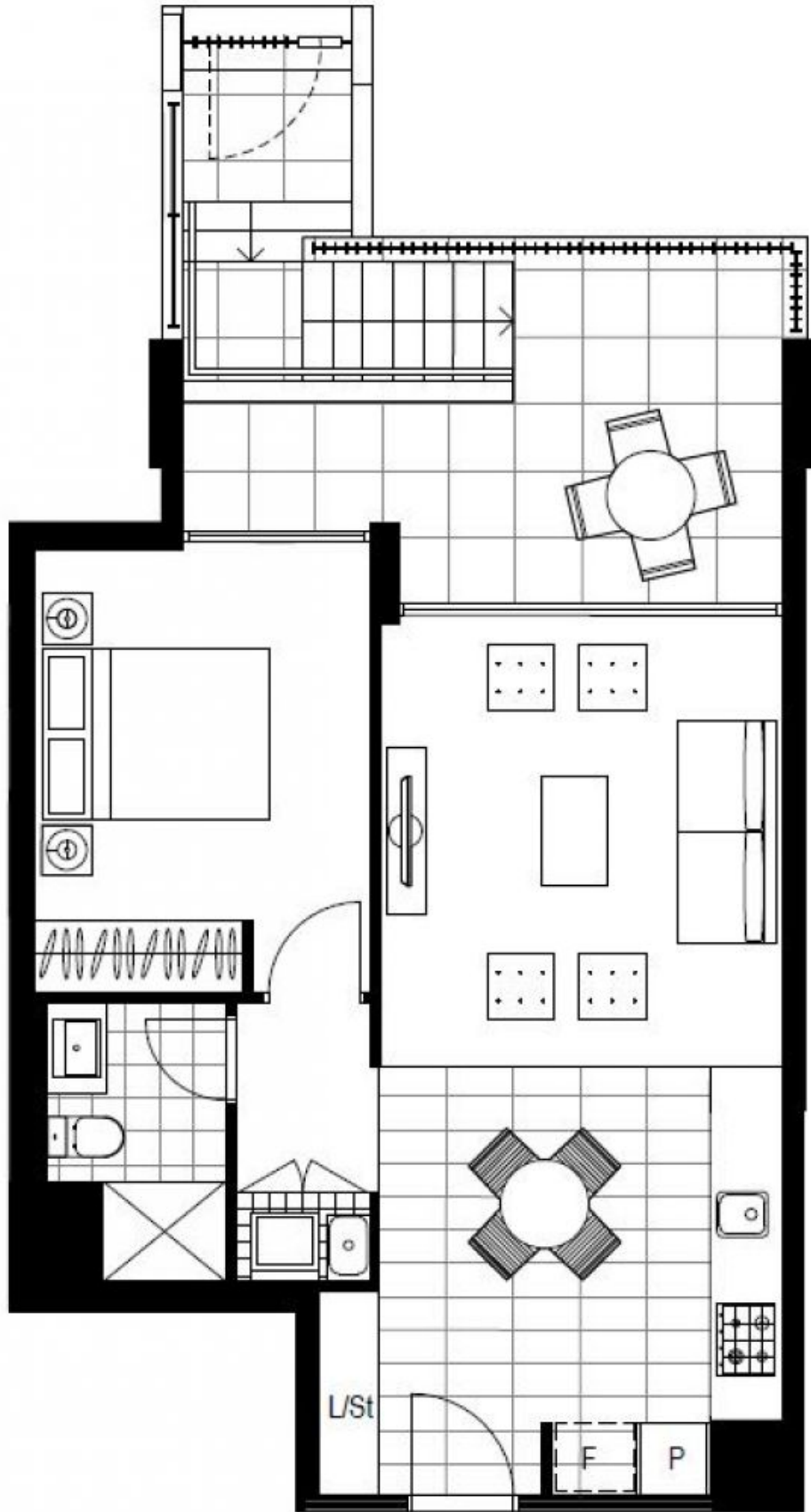
Boasting a delightful ground floor position with private access, this apartment offers exceptional one-bedroom living. It embraces an open plan in/outdoor design set to a backdrop of lush greenery with glimpses of historic homes. Have friends over for a drink or meal or meet at The Harold Park Hotel just around the corner or one of the many lively eateries at The Tramsheds.

- ? Roomy open plan indoor/outdoor living and entertaining
- ? Spacious living/dining, sizeable terrace with leafy outlooks
- ? Stone kitchen, gas cooking, Miele appliances, dishwasher
- ? Generous bedroom with built-in robe and terrace access
- ? Stylish fully tiled bathroom with internal laundry facilities

Buyers Guide \$779,000

Council Rates: \$295/qtr (approx)
Strata Rates: \$1,265/qtr (approx)
Contact: Emma Symonds
 02 8588 8888
 0412 660 011
 Emma Symonds
 02 8588 8888
 0412 660 011

Type: Apartment
Land: 68Square Metres
<https://www.resbymirvac.com>



Plans shown are only indicative of layout. Dimensions are approximate.

Glebe, NSW
23 Minogue Crescent