



**Glebe, NSW**  
602/119 Ross Street

**1**  
BED

**1**  
BATH

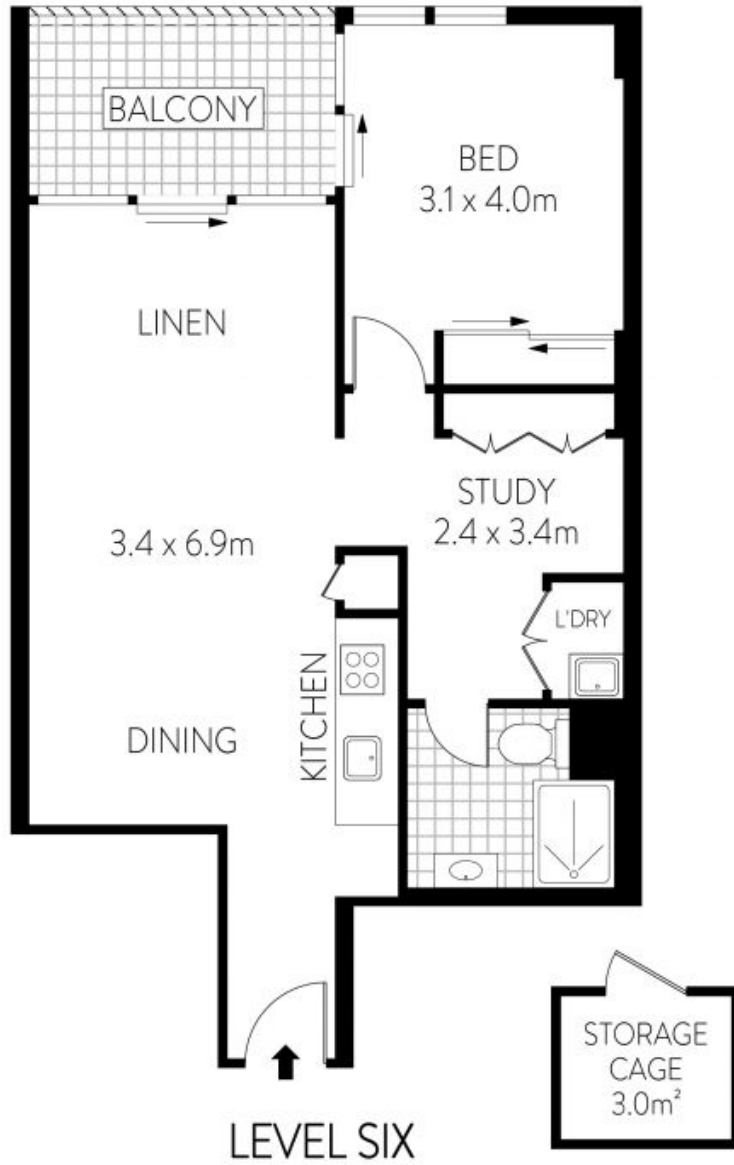


**Sleek modern living and entertaining steps to the Tramsheds**

Impeccably appointed with sumptuous modern finishes and inclusions, this apartment offers sleek contemporary living and a cosmopolitan lifestyle. Think you can't entertain in a one-bedder? Think again. The open plan indoor/outdoor design is perfect for dinner parties and friendly gatherings. Step out and stroll to the Tramsheds for a coffee, delicious meal or dessert.

- ? Sumptuous open plan kitchen and roomy living/dining area
- ? Balcony with pleasant outlooks ideal for alfresco entertaining
- ? Stone bench tops, gas stainless steel appliances, dishwasher
- ? Generous bedroom with built-in robe plus fully tiled bathroom
- ? Internal laundry room, ducted air conditioning, security block

**SOLD | \$750,000**  
**Council Rates:** \$286/qtr (approx)  
**Strata Rates:** \$744/qtr (approx)  
**Contact:** Emily Seymour  
 02 8588 8888  
 0497 333 559  
 William Kwok  
 0285888888  
 0481 702 370  
**Type:** Apartment  
**Sold Date:** 11/10/2022  
<https://www.resbymirvac.com>



PLANS SHOWN ONLY INDICATIVE OF LAYOUT. DIMENSIONS ARE APPROXIMATE.  
Floor plans by www.remaustralia.com  
Ref. No: T5342

INTERNAL : 56m<sup>2</sup>  
BALCONIES : 7m<sup>2</sup>  
STORAGE CAGE : 3m<sup>2</sup>



**real estate services**  
by mirvac



Plans shown are only indicative of layout. Dimensions are approximate.

**Glebe, NSW**  
602/119 Ross Street

FOREST LODGE