



## Sydney Olympic Park, NSW

21406/2 Figtree Drive

1 BED 1 BATH 1 CAR 

### Near-New 1 Bedroom + Study Room Apartment with Parking in Sydney Olympic Park

Welcome to Pavilions in Sydney Olympic Park

Located in Sydney Olympic Park, you will find yourself within close proximity to an abundance of parklands, cafes, restaurants & bars, public transport and world-class sporting facilities. As a resident in Pavilions by Mirvac you will enjoy access to a gym, co-working space as well as a children's play area.

This 73sqm, 14th floor apartment features:

- Spacious bedroom with built-in wardrobe
- Separate study room, perfect for a home office or nursery

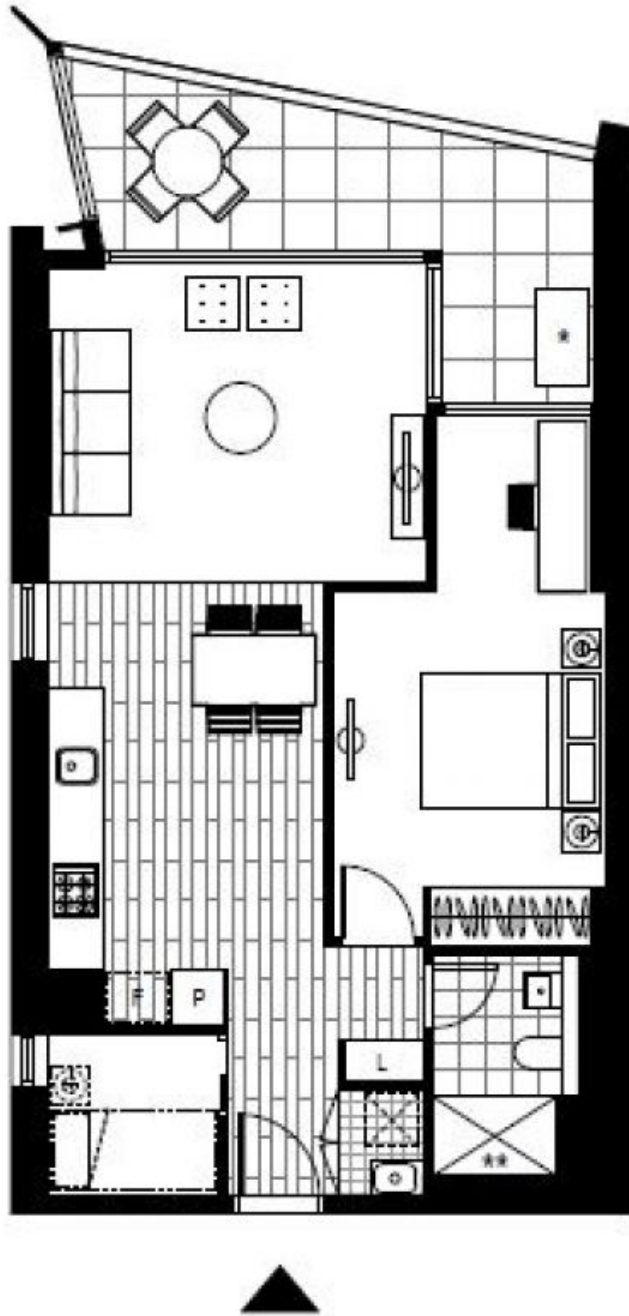
### Deposit Taken

Contact: Christine Howison  
02 8588 8888  
0459 222 085  
Georgia Glynn  
02 8588 8888  
0481 388 777

Type: Apartment

Date Available: 06/09/2022

<https://www.resbymirvac.com>



Plans shown are only indicative of layout. Dimensions are approximate.

**Sydney Olympic Park, NSW**  
21406/2 Figtree Drive