



Glebe, NSW
303/170 Ross Street

2
BED

2
BATH

1
CAR



Pristine contemporary-style living a brief stroll to the Tramsheds

Part of the sleek and sophisticated Harold Park complex, this apartment is a true lifestyle address. Stay in and enjoy contemporary-style design, open plan in/outdoor entertaining and sumptuous appointments or step out to parks, walking tracks, foreshore reserves and the cosmopolitan Tramsheds. Maintain an active social life with local cafes, restaurants and nightlife.

- ? Expansive living/dining room opens onto covered terrace
- ? Stone kitchen bench tops, gas stainless steel appliances
- ? Generous bedrooms with built-in robes, main with ensuite
- ? Quality bathrooms, ensuite with bathtub, internal laundry
- ? All white included in sale including fridge, washing & dryer

Under Contract

Council Rates: \$286/qtr (approx)

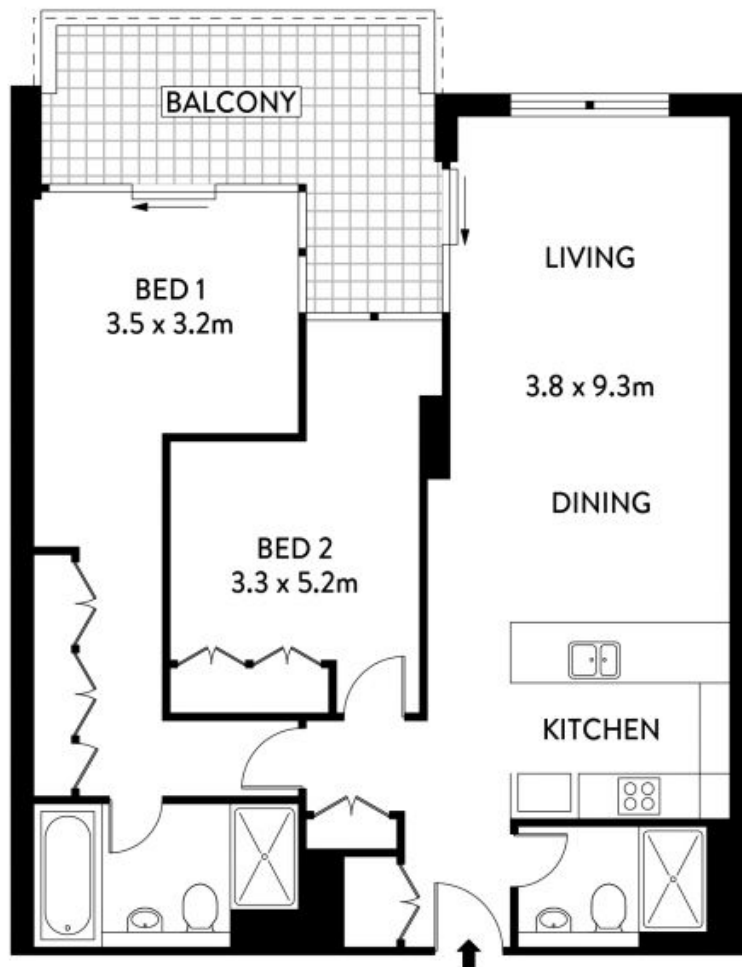
Strata Rates: \$1,363/qtr (approx)

Contact: Matthew Matthews
02 8588 8888
0418 266 590
William Kwok
0285888888
0481 702 370

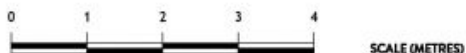
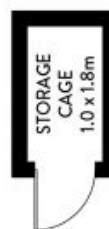
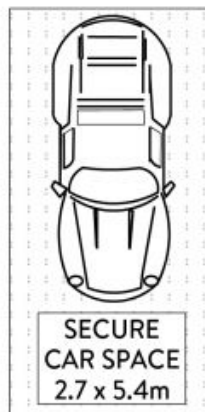
Type: Apartment

Sold Date: 03/11/2022

<https://www.resbymirvac.com>



LEVEL THREE



PLANS SHOWN ONLY INDICATIVE OF LAYOUT. DIMENSIONS ARE APPROXIMATE.
Floor plans by www.remaustralia.com
Ref. No: 15344

INTERNAL	: 91.55m ²
BALCONY	: 13.65m ²
STOAREG CAGE	: 1.8m ²
CAR SPACE	: 14.58m ²



Plans shown are only indicative of layout. Dimensions are approximate.

303/170 ROSS STREET

HAROLD PARK

Glebe, NSW
303/170 Ross Street