



Sydney Olympic Park, NSW

22905/2 Figtree Drive

1
BED

1
BATH



Brand New 1 Bedroom Apartment in 'Pavilions', Sydney Olympic Park

Welcome to Pavilions in Sydney Olympic Park

Located in Sydney Olympic Park, you will find yourself within close proximity to an abundance of parklands, cafes, restaurants & bars, public transport and world-class sporting facilities. As a resident in Pavilions by Mirvac you will enjoy access to a gym, co-working space as well as a children's play area.

This 58sqm, 29th floor apartment features:

- Spacious bedroom with built-in wardrobe
- Open-plan living and dining area, flowing onto private North-West facing balcony

Deposit Taken

Contact:

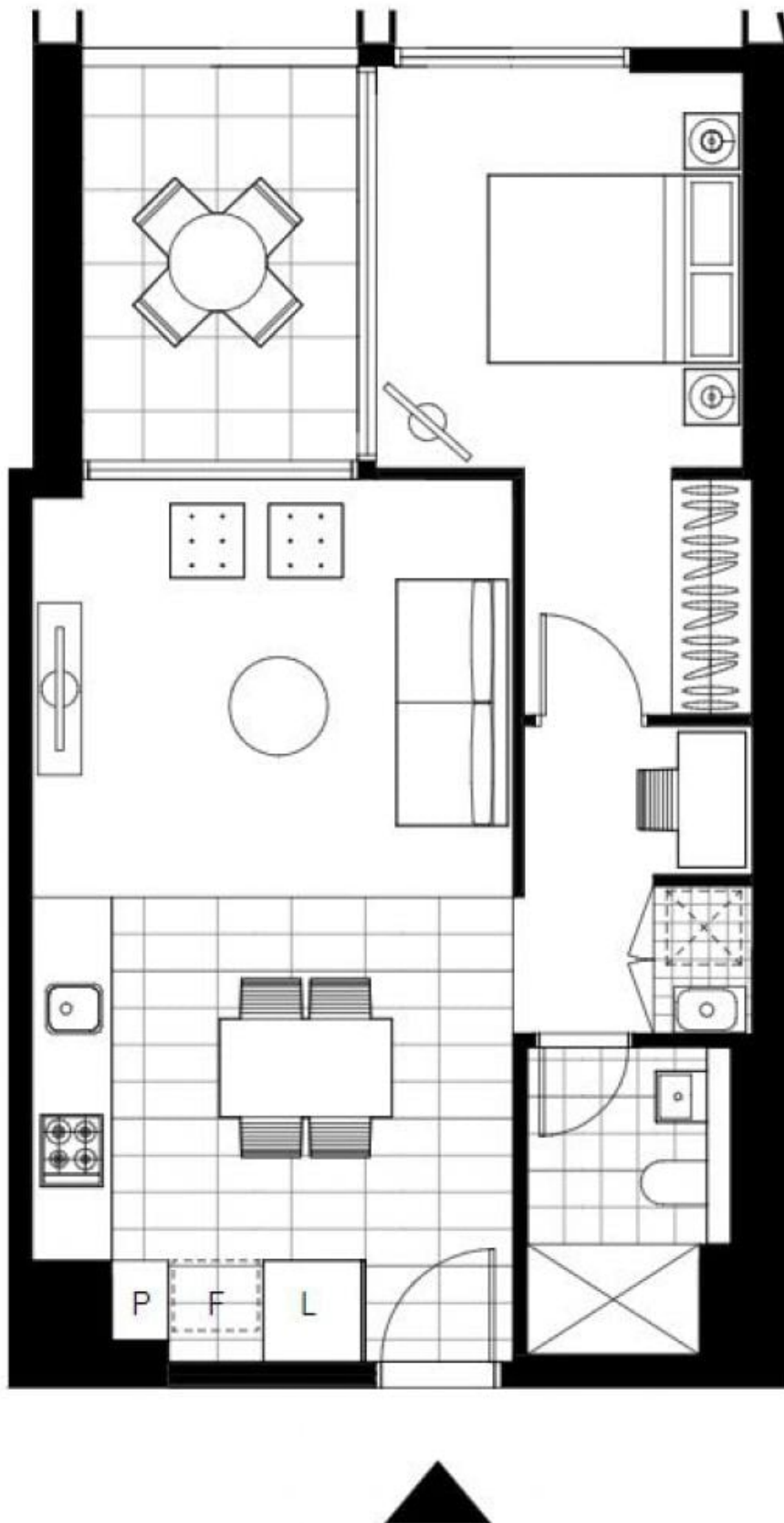
Georgia Glynn
02 8588 8888
0481 388 777
Christine Howison
02 8588 8888
0459 222 085

Type:

Apartment

Date Available: 31/08/2022

<https://www.resbymirvac.com>



Plans shown are only indicative of layout. Dimensions are approximate.

Sydney Olympic Park, NSW
22905/2 Figtree Drive