



Glebe, NSW
108/6 Maxwell Road

2 BED **2** BATH **1** CAR **RES**

Furnished and Superbly Appointed 2 Bedroom Apartment Facing Directly Over Harold Park

Welcome to Harold Park, Glebe's Secret Backyard.

Here in Harold Park you will find yourself in an idyllic parkside location, with only a short walk to Glebe Foreshore. Just meters away, The Tramsheds retail precinct resides featuring cafes, a grocery store, restaurants and a medical centre.

This 2-Bedroom Apartment features:

- Large bedrooms with generous built-in wardrobes
- Spacious living and dining area, leading to the balcony
- Living and bedrooms over look the park

\$1000 per week | Deposit taken

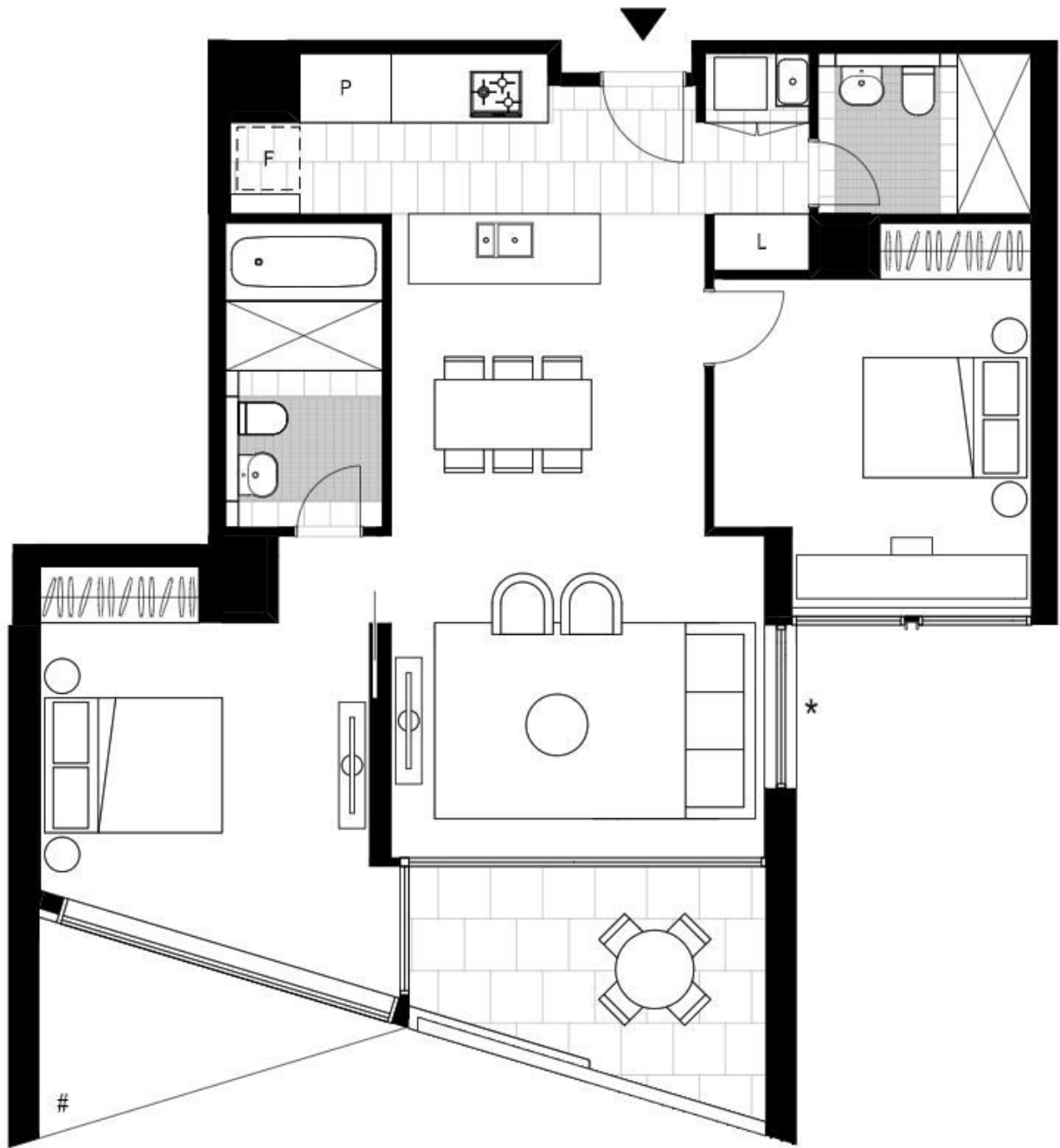
Contact: Naz Sabzpouri
02 8588 8888
0401 545 440

Type: Apartment

Date Available: 31/08/2022

Bond: \$4000

<https://www.resbymirvac.com>



Plans shown are only indicative of layout. Dimensions are approximate.

Glebe, NSW
108/6 Maxwell Road