



## Glebe, NSW

310/2 Scotsman Street

**1**  
BED

**1**  
BATH



### Large 1-Bedroom Apartment in Harold Park

Welcome to Harold Park, Glebe's Secret Backyard.

Here in Harold Park you will find yourself in an idyllic parkside location, with only a short walk to Glebe Foreshore. Just meters away, The Tramsheds retail precinct resides featuring cafes, a grocery store, restaurants and a medical centre.

This 61sqm Apartment has to offer:

- Large bedroom with floor to ceiling built-ins
- Balcony with a leafy outlook
- Stone benchtops and Miele appliances in kitchen
- Internal laundry with washing machine and dryer included

**\$650 per week | Deposit taken! pw**

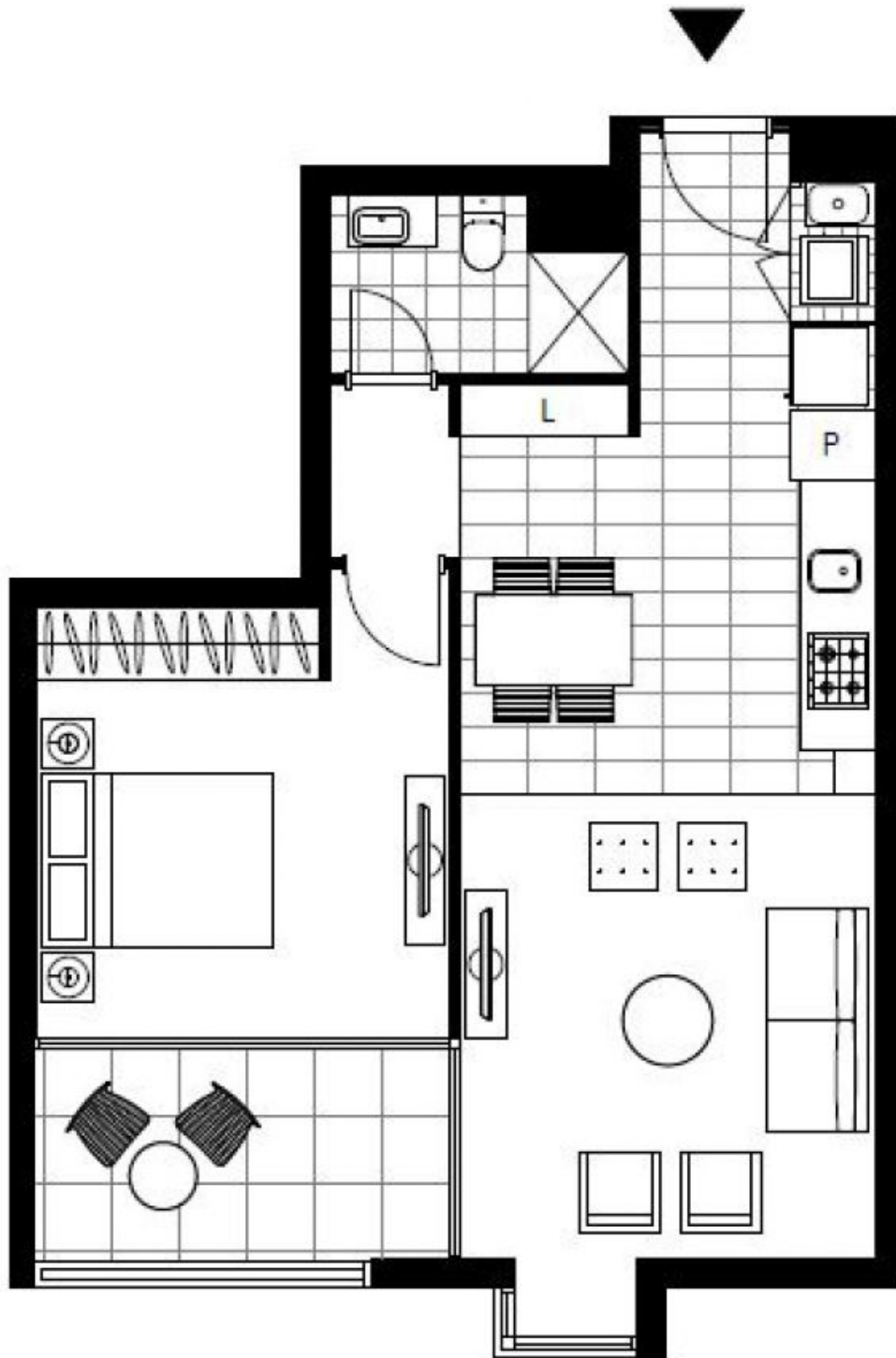
**Contact:** Georgia Glynn  
02 8588 8888  
0481 388 777

**Type:** Apartment

**Date Available:** 22/08/2022

**Bond:** \$2600

<https://www.resbymirvac.com>



Plans shown are only indicative of layout. Dimensions are approximate.

**Glebe, NSW**  
310/2 Scotsman Street

LEVEL 3,5