

## Glebe, NSW

7413/2 Cullen Close

**1**  
BED

**1**  
BATH



### Bright 1-Bedroom Apartment in Harold Park

Welcome to Harold Park, Glebe's Secret Backyard.

Here in Harold Park you will find yourself in an idyllic parkside location, with only a short walk to Glebe Foreshore. Just meters away, The Tramsheds retail precinct resides featuring cafes, a grocery store, restaurants and a medical centre.

This Mirvac Apartment features:

- Generously appointment bedroom with built-in wardrobe
- Open-plan living and tiled dining area
- Contemporary kitchen with stone benchtop and Miele appliances
- Modern bathroom with plenty of vanity storage

**\$640 per week**

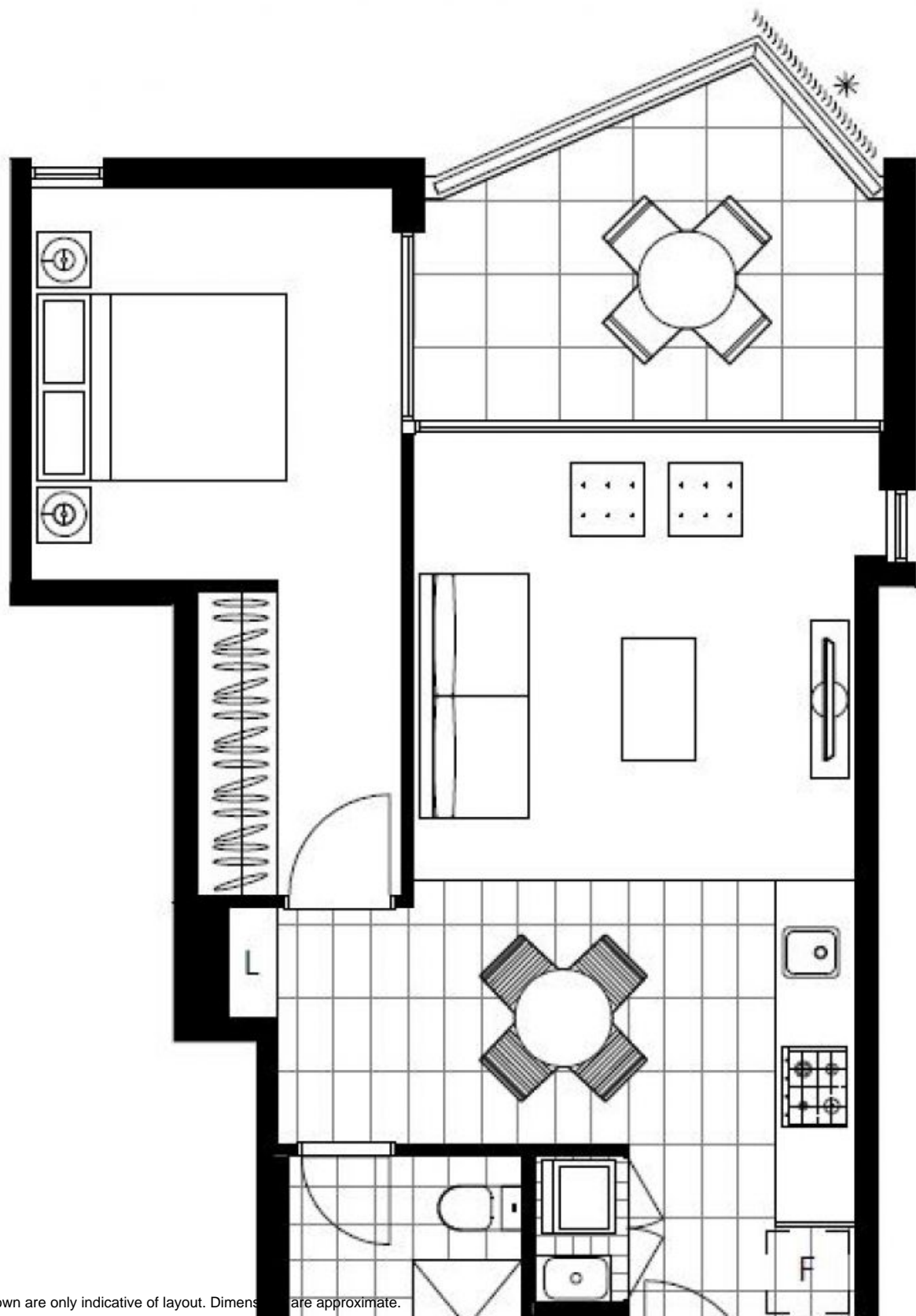
**Contact:** Naz Sabzpouri  
02 8588 8888  
0401 545 440

**Type:** Apartment

**Date Available:** 19/08/2022

**Bond:** \$2560

<https://www.resbymirvac.com>



Plans shown are only indicative of layout. Dimensions are approximate.

**Glebe, NSW**  
7413/2 Cullen Close