



EAST MELBOURNE, VIC
903/296 Victoria Parade

1 BED **1** BATH **1** CAR



Luxury 1Bedroom Apartment plus study ? City Views!
Welcome to The Eastbourne, one of Melbourne's most prestigious buildings.

Eastbourne is an inner-city Eden, a heartbeat from the city, yet feeling like a million miles away. Located in East Melbourne, a neighbourhood of distinction, steeped in history and home to a privileged few. A dazzling array of resort style amenities are available to the fortunate residents of The Eastbourne; comprising of pool, gymnasiums, yoga/ pilates room, residents lounge with courtyard terrace, entertainers kitchen and dining room, private theatre and 24/7 concierge.

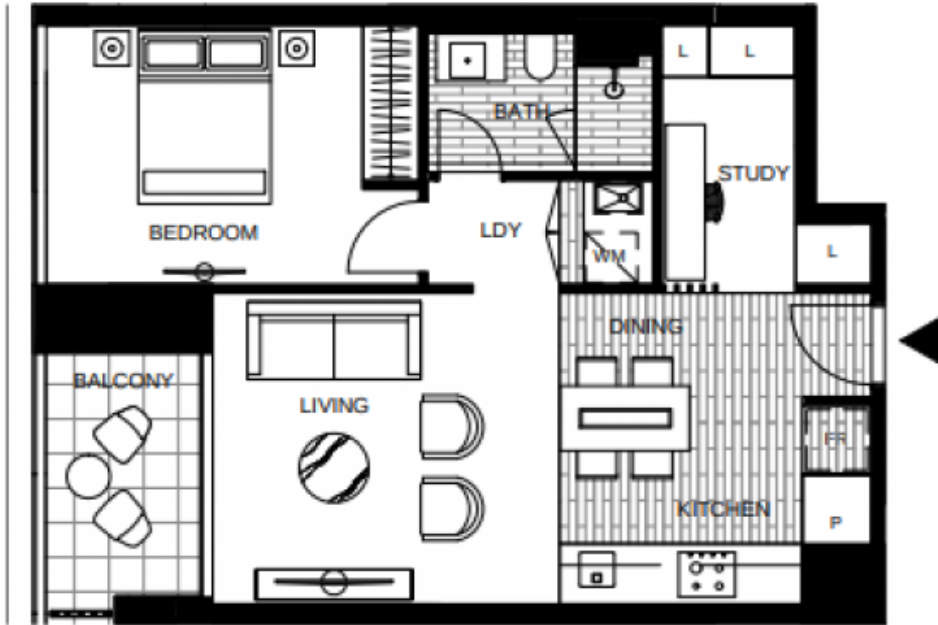
Melbourne's inner city Eden

Contact: Aleiasha Clark
03 9645 1199
0491 174 507

Type: Apartment
Date Available: 01/08/2022

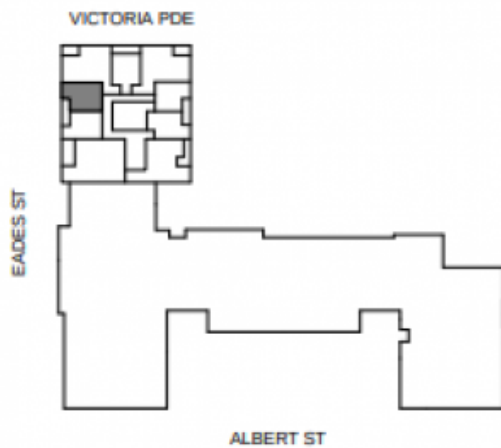
Bond: \$2824
<https://www.resbymirvac.com>

This 1 Bedroom, 1Bathroom, 1 Car space apartment features;



LEVEL 7V,8V,9V,10V

LOCATION PLAN



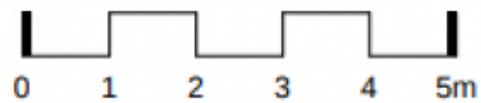
APARTMENT 1 BED 1 BATH + STUDY



Internal Area 60m²
Balcony Area 5m²

Total Area 65m²

Areas subject to final survey, area includes balcony and/or terrace where applicable. It excludes parking and external storage areas.



Plans shown are only indicative of layout. Dimensions are approximate.

EAST MELBOURNE, VIC
903/296 Victoria Parade