



**Glebe, NSW**  
7408/2 Cullen Close

**2** BED **2** BATH **1** CAR

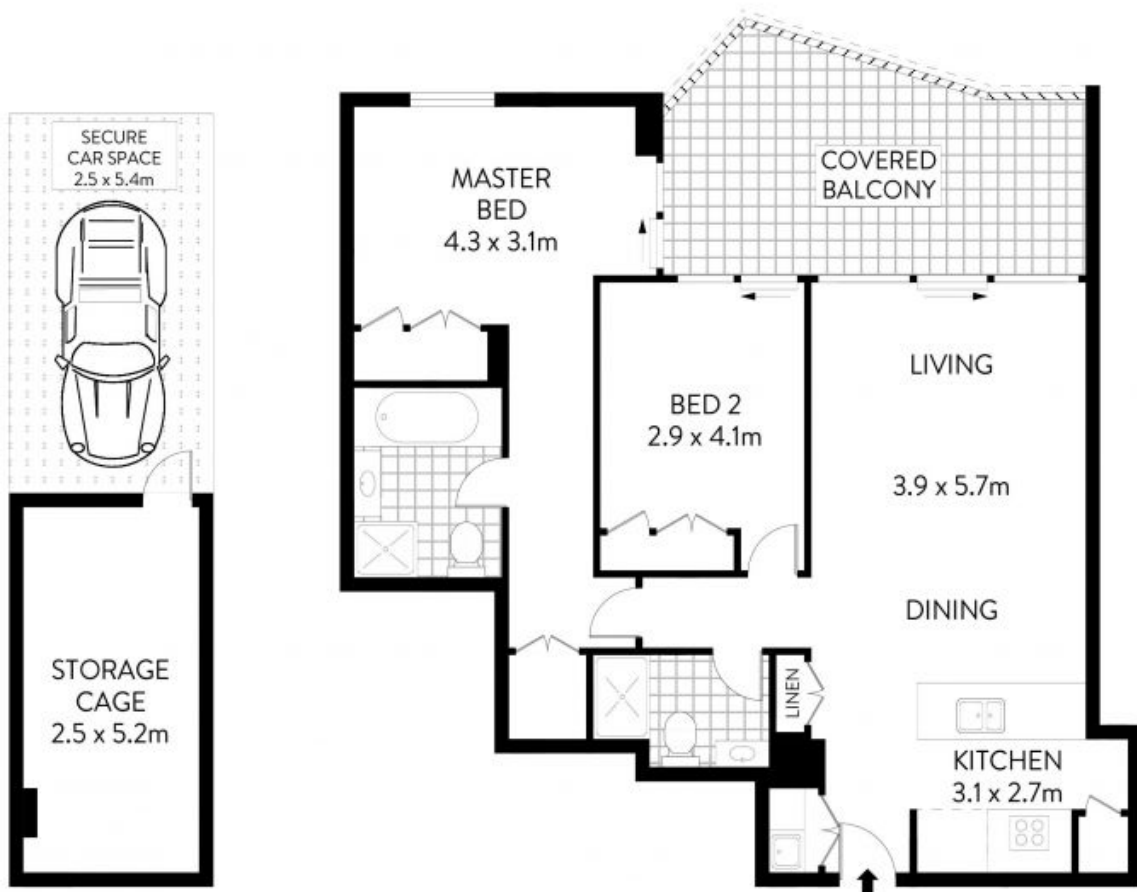


**Active and social lifestyle living in chic 'Harold Park' complex**

With clean lines, sumptuous appointments and generous light-filled interiors, this apartment offers a chic modern living in the popular Harold Park development. It embraces open plan indoor/outdoor entertaining while enjoying pleasant residential outlooks. Promoting an active and social lifestyle, it enjoys walking tracks, bike paths and foreshore reserves at its door.

- ? Spacious living/dining room flows to a covered terrace
- ? Kitchen with stone bench tops and a lovely breakfast bar
- ? Gas stainless steel Miele appliances including a dishwasher
- ? Generous bedrooms with built-in robes, main with ensuite
- ? Stylish bathrooms, internal laundry room, air conditioning

**Sold \$1,280,000**  
**Council Rates:** \$286/qtr (approx)  
**Strata Rates:** \$1,441/qtr (approx)  
**Contact:** Matthew Matthews  
 02 8588 8888  
 0418 266 590  
 William Kwok  
 0285888888  
 0481 702 370  
**Type:** Apartment  
**Sold Date:** 17/12/2022  
**Land:** 94Square Metres  
<https://www.resbymirvac.com>



LEVEL FOUR



PLANS SHOWN ONLY INDICATIVE OF LAYOUT. DIMENSIONS ARE APPROXIMATE.  
 Floor plans by www.remaustralia.com  
 Ref. No: 15120

INTERNAL : 83m<sup>2</sup>  
 BALCONY : 17m<sup>2</sup>  
 CAR SPACE : 16m<sup>2</sup>  
 STORAGE : 13m<sup>2</sup>



7408/2 CULLEN CLOSE

Plans shown are only indicative of layout. Dimensions are approximate.

FOREST LODGE

**Glebe, NSW**  
 7408/2 Cullen Close