



## Waterloo, NSW

2205/17 Lachlan Street

**2** BED **2** BATH **1** CAR 

### Quiet yet convenient living in resort-style building 'The Finery'

Showcasing clean lines, neutral tones and a fluid open plan in/outdoor design, this apartment is set in the prized resort-style building 'The Finery'. An urban sanctuary, it's peaceful, light-filled and well-appointed while being positioned for convenience with cosmopolitan attractions at your doorstep. The shared rooftop with a pool is perfect for entertaining.

- ? Pristine open plan kitchen and a vast living/dining room
- ? Stone kitchen, gas stainless steel appliances, dishwasher
- ? Full-width L-shaped balcony for alfresco entertaining
- ? Generous bedrooms with built-ins and balcony access
- ? Luxurious fully tiled bathrooms, ensuite with a bathtub
- ? Internal laundry, ducted air conditioning, secure block

**\$1,050,000**

**Council Rates:** \$286/qtr (approx)

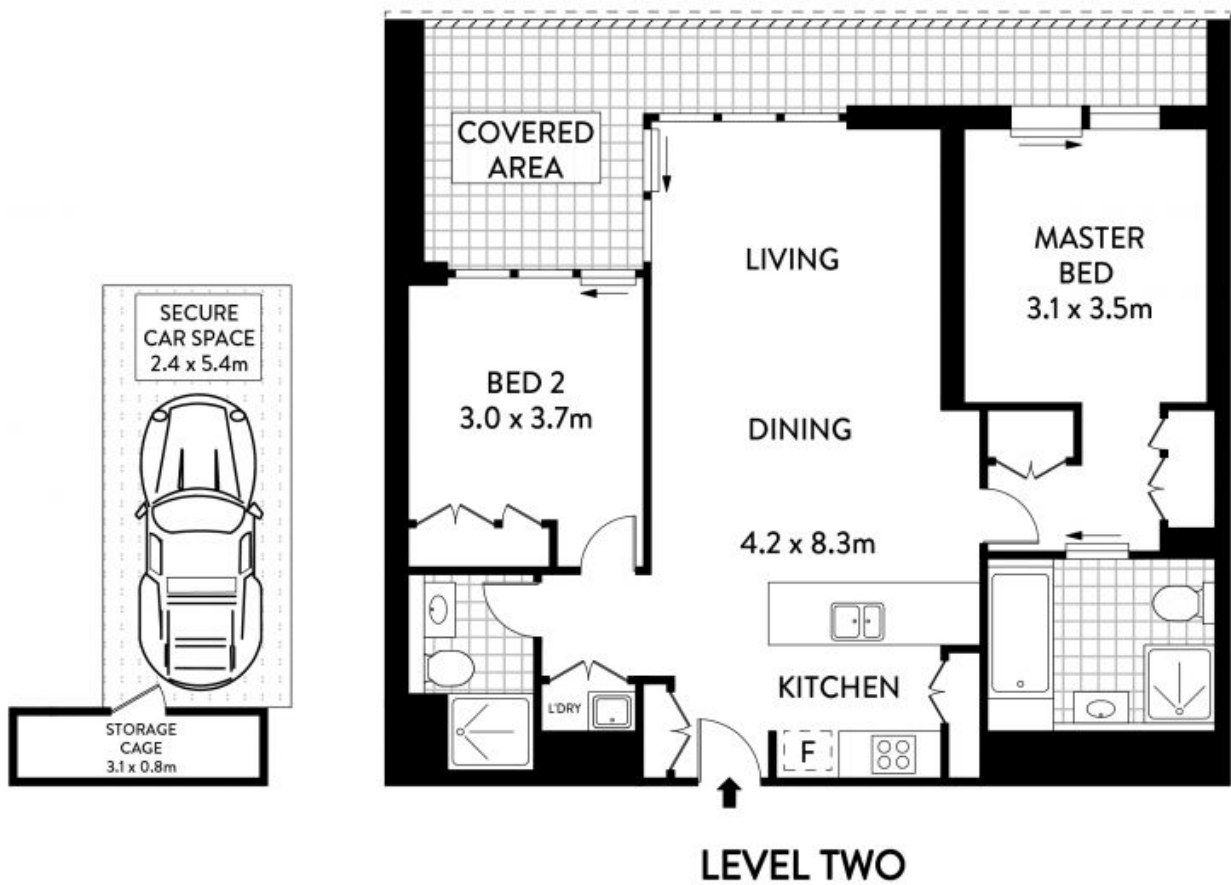
**Strata Rates:** \$1,204/qtr (approx)

**Contact:** Matthew Matthews  
02 8588 8888  
0418 266 590  
William Kwok  
0285888888  
0481 702 370

**Type:** Apartment

**Land:** 90Square Metres

<https://www.resbymirvac.com>



PLANS SHOWN ONLY INDICATIVE OF LAYOUT. DIMENSIONS ARE APPROXIMATE.  
Floor plans by www.remaustralia.com  
Ref. No: 115329

INTERNAL : 77.34m<sup>2</sup>  
BALCONY : 16.11m<sup>2</sup>  
STOAREG CAGE : 2.48m<sup>2</sup>  
CAR SPACE : 12.96m<sup>2</sup>

NOTE :- STORAGE CAGE



Plans shown are only indicative of layout. Dimensions are approximate.

2205/17 LACHLAN STREET

WATERLOO

**Waterloo, NSW**  
2205/17 Lachlan Street