



## Zetland, NSW

1902/6 Ebsworth Street

**2** BED **2** BATH **1** CAR 

### Stylish sky-home at a cosmopolitan address near Green Square

Boasting a northerly aspect and soaking in the sunshine via its floor-to-ceiling windows, this apartment is a sleek and stylish sky-home. It enjoys pleasant urban outlooks from its 19th floor position while offering a roomy in/outdoor design. A popular city-fringe lifestyle, it encourages an active social life ideal for those who love shopping, dining and cultural activities.

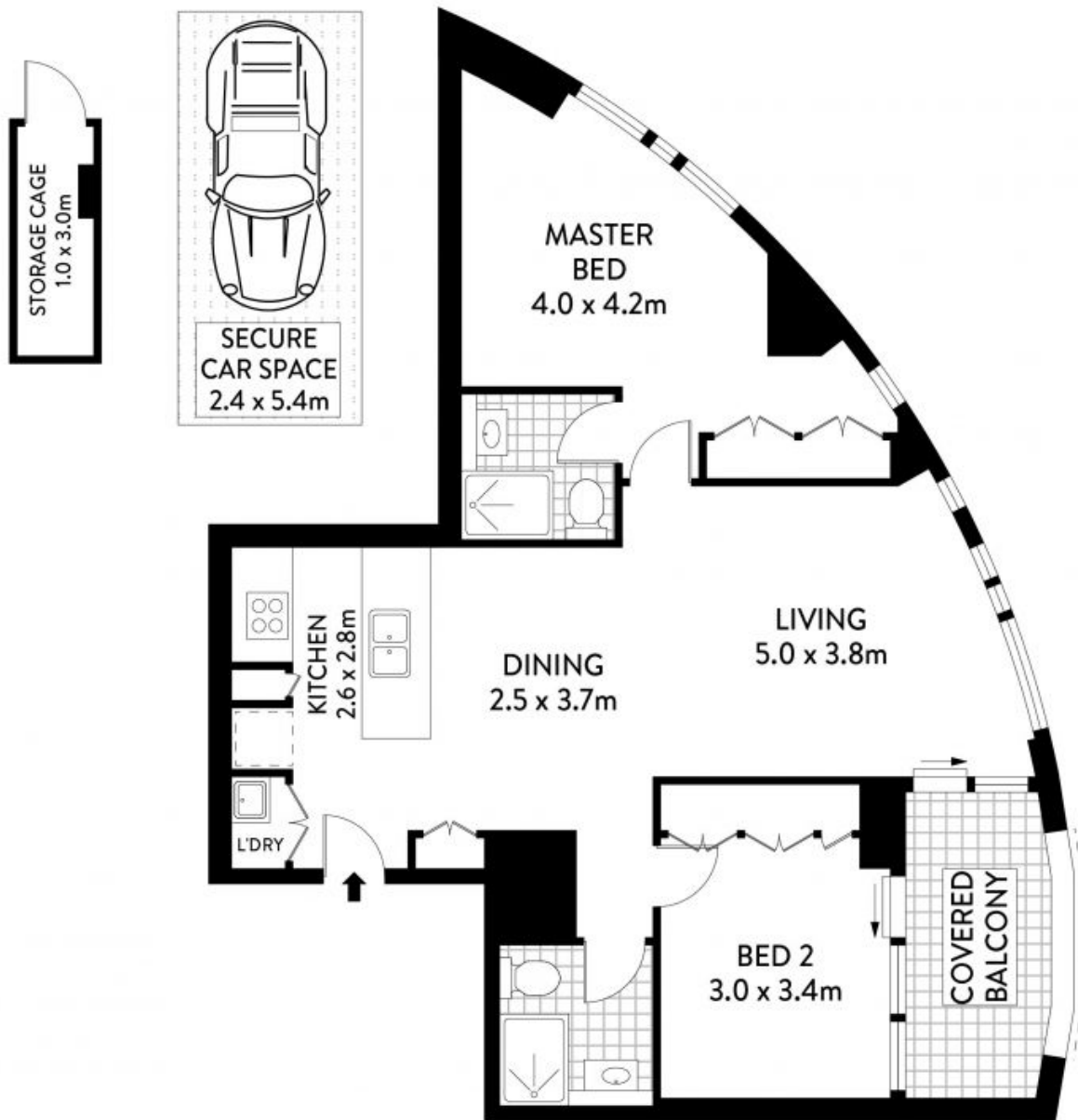
- ? Spacious living/dining room flowing to a covered balcony
- ? Stone kitchen, gas stainless steel Miele cooking appliances
- ? Generous bedrooms with built-in robes, fully tiled bathrooms
- ? Internal laundry, ducted air conditioning, security entrance
- ? Security entrance, secure underground parking, lift access

### Contact Agent

**Council Rates:** \$286/qtr (approx)  
**Strata Rates:** \$1,336/qtr (approx)  
**Contact:** Emma Symonds  
 02 8588 8888  
 0412 660 011

**Type:** Apartment

<https://www.resbymirvac.com>



## LEVEL NINETEEN



PLANS SHOWN ONLY INDICATIVE OF LAYOUT. DIMENSIONS ARE APPROXIMATE.  
 Floor plans by [www.remaustralia.com](http://www.remaustralia.com)  
 Ref. No: 15056

NOTE :- STORAGE CAGE

INTERNAL : 81.53m<sup>2</sup>  
 BALCONY : 7.39m<sup>2</sup>  
 STOAREG CAGE : 3.00m<sup>2</sup>  
 CAR SPACE : 12.96m<sup>2</sup>



1902/6 EBSWORTH STREET

Plans shown are only indicative of layout. Dimensions are approximate.

ZETLAND

**Zetland, NSW**  
 1902/6 Ebsworth Street