



DOCKLANDS, VIC

1302/100 Lorimer Street

1
BED

1
BATH

1
CAR



Experience THE BEST 1Bedroom floorplan Yarra's Edge

Welcome to Array Tower, Mirvac's most coveted Tower within the Yarra's Edge precinct.

Here in Yarra's Edge you will find yourself in a perfectly positioned waterfront location, only moments away from an array of cafes, restaurants, parks, Yarra's Edge promenade and IGA supermarket. Residents may also enjoy access to Array's exclusive residents lounge, gymnasium as well as the state-of-the-art 'RekDek' sporting facilities comprising indoor pool, sauna, spa, steam room and gym at the base of Tower 1.

\$600 per week

Contact: Aleiasha Clark
03 9645 1199
0491 174 507

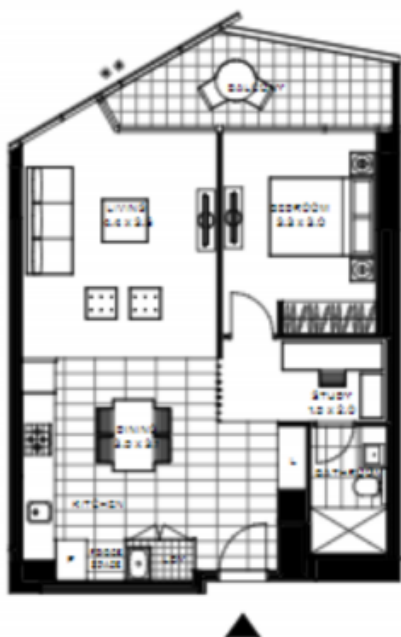
Type: Apartment

Date Available: 27/07/2022

Leased Date: 27/07/2022

Bond: \$2607

<https://www.resbymirvac.com>



1302/100 Lorimer St, Docklands

1 Bed | 1 Bath | 1 Car

Level 13

- Northern aspect, marina views
- Cabinetry included in hallway (study)
- Internal area; 67M2
- Balcony area; 8M2
- Secure parking X1

For more information, please contact:

Aleiasha Clark
0491 174 507
aleiasha.clark@resbymirvac.com



Plans shown are only indicative of layout. Dimensions are approximate.

DOCKLANDS, VIC
1302/100 Lorimer Street