



Glebe, NSW

309/105 Ross Street

1
BED

1
BATH



Over-sized 72sqm 1-Bedroom Apartment in Harold Park

Welcome to Harold Park, Glebe's Secret Backyard.

Here in Harold Park you will find yourself in an idyllic parkside location, with only a short walk to Glebe Foreshore. Just meters away, The Tramsheds retail precinct resides featuring cafes, a grocery store, restaurants and a medical centre.

This 72sqm, 1-Bedroom Apartment features:

- Large bedroom with floor to ceiling built-in wardrobes
- Tiled open-plan living and dining area flowing onto balcony
- Modern kitchen with stone bench top and Miele appliances

\$650 per week

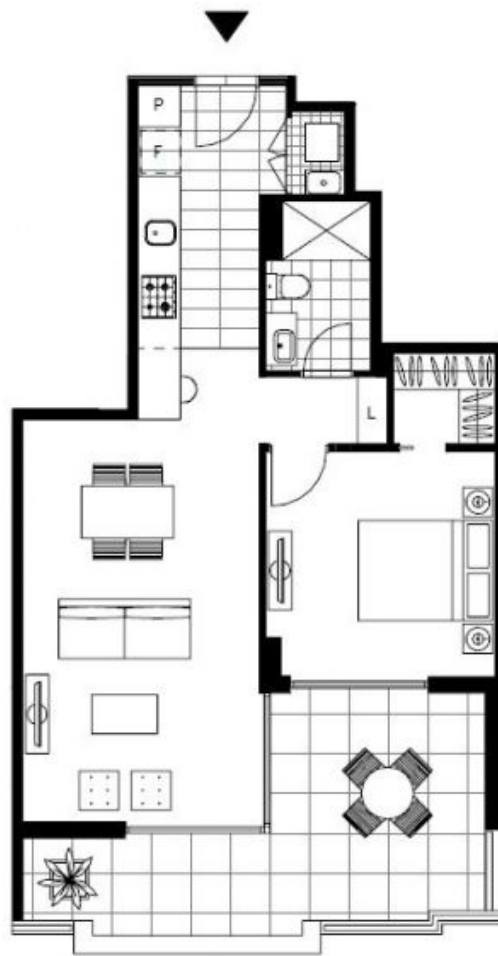
Contact: Naz Sabzpouri
02 8588 8888
0401 545 440

Type: Apartment

Date Available: 30/07/2022

Bond: \$2600

<https://www.resbymirvac.com>



LEVEL 3

Plans shown are only indicative of layout. Dimensions are approximate.

Glebe, NSW
309/105 Ross Street